

# Southeastern Region Convention

PIEDMONT  DIVISION  
**TIMETABLE**

VOLUME 22 NUMBER 3

Effective 12:01 AM ET Sunday July 1st 2018



PIEDMONT DIVISION



# PIEDMONT DIVISION LEADERSHIP

SUPERINTENDENT (2018)	WALT LILES
<a href="mailto:wiles.crrman@gmail.com">wiles.crrman@gmail.com</a>	678 896-6311
OPERATIONS (2019)	SALLY BANDO
<a href="mailto:sbandogeorgia@comcast.net">sbandogeorgia@comcast.net</a>	404 550-4816
FINANCE (2019)	DIANE MARTIN
<a href="mailto:diane.m.martin2011@gmail.com">diane.m.martin2011@gmail.com</a>	770 710-8522
ADMINISTRATION (2018)	MIKE FLEMING
<a href="mailto:drmtf@yahoo.com">drmtf@yahoo.com</a>	770 891-9446
MEMBERSHIP (2018)	MIKE CUMMINGS
<a href="mailto:ELrailroad1970@gmail.com">ELrailroad1970@gmail.com</a>	770 715-8071

## DIRECTORS AT LARGE

ROYAL BRUCE (2019)	BOB KELSHAW (2019)
<a href="mailto:royalbruce@comcast.net">royalbruce@comcast.net</a>	<a href="mailto:bob.kelshaw@comcast.net">bob.kelshaw@comcast.net</a>
941 374-1911	713-816-1253
JOHN FALK (2018)	PERRY LAMB (2018)
<a href="mailto:johnfalk50@gmail.com">johnfalk50@gmail.com</a>	<a href="mailto:perry_lamb@mindspring.com">perry_lamb@mindspring.com</a>
678 361-4458	770 218-9744
STEVE FUNSTEN (2017)	JIM TRAVIS (2018)
<a href="mailto:stevemunsten@bellsouth.net">stevemunsten@bellsouth.net</a>	<a href="mailto:jgtravis@comcast.net">jgtravis@comcast.net</a>
404 312-6467	770 289-2020
HOWARD GOODWIN MMR (2019)	DOUG ALEXANDER (2019)
<a href="mailto:horn69@bellsouth.net">horn69@bellsouth.net</a>	<a href="mailto:doug_alexander@bellsouth.net">doug_alexander@bellsouth.net</a>
770 529-2103	404 272-2986

## SUPERINTENDENT EMERITUS

PETER YOUNGBLOOD, MMR  
[santaferailway@aol.com](mailto:santaferailway@aol.com) 770 966-1661

## PIEDMONT DIVISION SUPERINTENDENT'S REPORT SUMMER 2018



My wife and I attended the SouthEastern Region Convention in Lake Junaluska, NC on Memorial Day weekend. We had a wonderful time and saw old friends and made new ones. I must say we had a delightful breakfast with Dr. Joe Nichols, Sr. MMR on Friday morning. We learned so much about Atlanta and railroad history. I could have stayed longer but had to teach a clinic. It was really an enjoyable morning to just sit and talk with Dr. Joe.

Our Piedmont Division had a great showing of members present at the convention. I am very proud to say the following four dedicated members were awarded SER Service Awards at the banquet:

Sally Bando - Chairman's Award

David Gelmini - Dave Muller Award

Randal Watson - Vern Yarbrough Award

Dr Joe Nichols, Sr. MMR - Special Award for his long- term dedication to the hobby.

These four individuals are some of the most dedicated and devoted in our division and region. They are essential to making things run. Their long hours and constant volunteering to promote model railroading is outstanding. I would like to encourage more members to join in and volunteer at all the various levels of our organizations.

Our Director of Personnel Mike Cummings has been elected to the SER BOD as Secretary. Congratulations to Mike on his new position and role in the SER. I would also like to congratulate John Stevens on his new Position as VP/Administration on the NMRA National BOD. Also, a special thanks to all that voted for me on my attempt at Eastern District Director. I did not win but maybe one day.

I have to say if you are a model railroader, there is a lot available for you in the Piedmont Division. Our division is full of learning opportunities. If you have a particular skill, consider teaching it to others. Our hobby does seem to be thriving in our area. Modelers are excited, and they are building many new layouts.

We last left off about to have our Train Show in March. Under the leadership of David, Heather and Tyler Gelmini it was a very successful event with attendance of around 3300 folks. It takes a huge team behind them to support all the different duties and responsibilities. The division supported it with about 80 volunteers over the 3 days. A special THANK YOU to all our folks that supported the event and vendors who came from all over.

(continued on next page)



# PIEDMONT DIVISION SUPERINTENDENT'S REPORT JANUARY 2018

(continued from previous page)

Education seems to be one of the greatest things we can share in our hobby. The Piedmont Division Train-N-Camp is an excellent education resource for new or experienced modelers. On March 24<sup>th</sup> Perry Lamb and myself led a small group of modelers wanting to learn about installing DCC Sound into



locomotives. We went from 11 AM until almost 5 PM that day. It was exciting, and we got almost all the locos going. A special Thank You to HobbyTown USA Kenesaw for the use of their meeting room.

April was busy for Howard Goodwin MMR leading a BSA Merit Badge Day in Duluth with his volunteers. He had 29 scouts attend. This is a very successful program and it continues to stay strong every quarter.

Our April meeting featured the Spring Model and Photo Contest. Charlie Mason MMR reported that we had 11 models and 20 photographs entered in the contest. Raymond Stewart and Joe Sullivan have earned Association Volunteer AP Certificates. Sally Bando Director of Operations lined up Dr. Joe Nichols Jr. MMR who did a great clinic on Block Detection Options and More With JMRI.

Our division also attended the Chatsworth Model Train Expo on April 14<sup>th</sup>. We displayed NMRA info and had our basic 4x6 HO layout there running trains to share with visitors. Each year the event grows. This year they had about 250 visitors, which is a lot for a small town.



That same Saturday, the division sponsored Layout Open Houses at four layouts up the Northwest GA corridor around Canton. Arnold Eaves, John Bost, Phil Stead and Steve Austin featured their great layouts for folks to visit. Everything seems to land on that Saturday. We were everywhere.

May activities just kept us all busy and go go go! BOD member Steve Funsten hosted his Train and Swap meet at Blue Ox Trains in Roswell, GA. Mike Cummings had the membership table up and ready to recruit potential members and signed up two new members. The event probably had a couple of hundred visitors checking out all the cool train stuff. Great deals, food, fun and fellowship.

Peter Youngblood MMR reached out about a year ago and started planting the seed to get Tony Koester to host a clinic at our May monthly meeting. WHAT A TREAT! The time flew by listening to Tony that evening. It was a special evening and we were honored to have him come down for the meeting. His knowledge and enthusiasm went a long way with everyone who attended. Special thanks to Tony and Peter for making it happen. Our division is fortunate to be able to have exciting things like this. I hope other divisions catch on to what we are doing. Gets modelers excited about the hobby at all ages.

(continued on next page)

# PIEDMONT DIVISION SUPERINTENDENT'S REPORT JANUARY 2018

(continued from previous page)

On April 28<sup>th</sup> Kathy, David and Tyler Gelmini had a special day to honor Joe Gelmini's birthday by holding a layout open house on Joe's N-Scale Georgia Great Southern Railway. It was great see it operating trains and rolling with activity. It was a treat and a terrific way to honor Joe. David said they



had about 100 people come by. Joe did it the Southern Way!

We also had our Annual Facebook Photo Contest for photos taken between May 5<sup>th</sup> and May 12<sup>th</sup>. We had lots of great photo entries as well as other exciting train photos posted. Thanks to all who participat-

ed. You do not have to be a PD member, just a member on our FB page.

Winners were Dr. Michael Fleming with his model photo and Tim Lambert for a prototype KCS train. Honorable mention went to Cheryl Harton with a photo of the GNRR reflection in Canton, GA. Thanks for the great photos. It gets better each year for National Train Day.

I was not able to attend the National G-Scale Convention here in Atlanta but many of our members did. I understand they had almost 800 folks registered, and the convention was a lot of fun for all. I heard the layouts open houses were very well attended and from the photos on Facebook folks had a fun time seeing trains.

We have Train-N-Camp coming up on June 30<sup>th</sup>. Should be exciting to share how to lay flex track and ballasting. A good model railroad must have smooth rail lines for quality operations. Should be fun and looking forward to that Saturday.

The NMRA National Convention in Kansas City is not far off. Hope to see many of you there in August. I plan to take many photos. Please remember to post on the Piedmont Division Facebook page of your KC trip as well.

Keep checking the weights and wheels on your equipment to keep things rolling.

Till next quarter.

Respectfully,

—Walt Liles

Superintendent Piedmont Division



## NMRA MEMBER BENEFITS

### NMRA PARTNERSHIP PROGRAM

Like saving money?

Your membership can save you 5%, 10%, 15%, 20% and even up to 25% from more than 20 manufacturers and distributors of model railroad equipment, supplies and services.

Simply login to the [NMRA.ORG](http://NMRA.ORG) website and highlight the "Benefits" tab on the member home page. Then click on "NMRA Partnership Program" in the pull down menu. This will take you to a page listing all of the participating vendors with detailed instructions on how to take advantage of their discounts. It even includes links to the vendor websites. Nothing could be easier!

Start saving today by taking advantage of this outstanding NMRA member benefit!

Piedmont Division monthly meetings are held at:

### **Holy Innocents' Episcopal Church**

805 Mt. Vernon Highway, Atlanta, GA 30327

Division meeting are open to everyone. Come join us to see what fun Model Railroading is. See Division Calendar for details.

We hope to see you at our next meeting!





## PIEDMONT DIVISION COMMITTEE, PROGRAM AND ACTIVITY CHAIRS AND CONTACTS

**ACHIEVEMENT PROGRAM**  
Charles Mason  
candmjason@att.net  
770 993-1589

**ADVERTISING AND  
APPAREL/DIVISION STORE  
AND PIEDMONT PILGRIMAGE**  
Gary Jarabek  
gjarabek@bellsouth.net  
770 509-6941

**PRODUCTION AND MEMBER AID**  
Ovidiu Trifanescu  
piko7403@yahoo.com  
678 230-3184

**BOY SCOUTS MERIT BADGE**  
Howard Goodwin, MMR  
horn69@bellsouth.net  
770 529-2103

**ASSISTANT TRAIN SHOW**  
Gary Jarabek  
gjarabek@bellsouth.net  
770 509-6941

**LIBRARY—BOOKS**  
Stephen Leydon  
sleydon1@bellsouth.net  
770 338-4966

**LIBRARY—VIDEOS**  
David Gelmini  
actgel@bellsouth.net  
770 707-5019

**COFFEE COORDINATOR**  
John Falk  
johnfalk50@gmail.com  
678 361-4458

**NAME TAGS**  
James Bando  
horailroader@comcast.net  
770 928-2135

**MARKETING**  
Sally Bando  
sbandogeorgia@comcast.net  
770 928-2135

**RAFFLE LAYOUT**  
Raymond Stewart  
raystew@yahoo.com  
678 925-3270

**REFRESHMENTS**  
Dr. Gary Fish  
bigfish600@gmail.com  
770 846-2222

**TRAIN'IN CAMP**  
Perry Lamb  
training@pedmont-div.org  
770 331-1669

**GOOD AND WELFARE**  
Chuck & Mary Ann  
Hoesch  
hoesch@brmemc.net  
828 837-9686

**SPECIAL PROJECTS**  
Scott Chatfield  
blinddog@mindspring.com  
678 467-6480

**WEBMASTER**  
Scott Povlot  
spovlot@yahoo.com  
770 569-4678



The Intersection of:  
Model Railroading  
Linear Propulsion  
Limited Space



Linear Propulsion has been taken to the next level with a patented track that contains overlapping coils, enabling small object to be propelled around the track on a base of four small magnets.

Animate the scenery in your existing train layouts to add an extra wow factor Or use the 1:1000 scale (approximately) train cars to create a novelty desk or table top display.

[www.nanotrains.com](http://www.nanotrains.com) 770-710-8522

## OVERVIEW OF PIEDMONT DIVISION FINANCES FOR FIRST FIVE MONTHS OF 2018

	January thru May 2018	Budget	Amount Over Budget
<b>REVENUE</b>			
Advertising Sales	93.00		93.00
Contributions	1,096.65	1,094.55	2.10
Event Fees	25,524.00	27,541.00	(2,017.00)
Raffle Sales	857.00	1,000.00	(143.00)
Sales of Product	101.00	165.00	(64.00)
Table Rental	16,249.00	16,200.00	49.00
White Elephant Sales	1,901.25	1,200.00	701.25
<b>TOTAL REVENUE</b>	<b>45,821.90</b>	<b>47,200.55</b>	<b>(1,378.65)</b>
<b>TOTAL COST OF GOODS SOLD</b>	<b>- 545.07</b>	<b>- 562.50</b>	<b>(17.43)</b>
<b>GROSS PROFIT</b>	<b>45,276.83</b>	<b>46,638.05</b>	<b>(1,361.22)</b>
<b>EXPENSE</b>			
Accounting & Legal Fees	600.00	1,200.00	(600.00)
Advertising & Marketing	5,076.41	6,200.00	(1,123.59)
Bank Charges	605.95	475.00	130.95
Booth Expense	61.48		61.48
Total Entertainment			
Facility Rental	14,837.50	16,250.00	(1,412.50)
Furniture Rental	4,788.33	4,700.00	(88.33)
Good & Welfare		41.65	(41.65)
Insurance	165.00	165.00	
Layout Cost	1,250.00	1,150.00	(100.00)
Total Membership Drive			
Office Supplies	421.75	633.30	(211.55)
Operating Supplies	369.30	786.65	(417.35)
Plaques & Awards	317.07	200.00	117.07
P.O. Box Rental	252.00	250.00	2.00
Postage	3,486.48	3750.00	(263.52)
Program Food & Beverages		260.00	(260.00)
Publishing	1,838.22	1,450.00	388.22
Raffle Expense	91.50		91.50
Software & Internet	129.99	208.35	(78.36)
Taxes & Licenses	30.00	30.00	
Total Travel	619.19	1,000.00	(380.81)
<b>TOTAL EXPENSE</b>	<b>34,940.17</b>	<b>38,749.95</b>	<b>(3,809.78)</b>
<b>NET OPERATING REVENUE</b>	<b>10,336.66</b>	<b>7,888.10</b>	<b>2,448.56</b>

Monthly Financial Reports are presented to the Board of Directors.



## IT TAKES A DIVISION

As I have been going around to see more and more of the amazing layouts in our Division, I have discovered a common theme.

I will complement a standout structure and often the response is "oh yes, so-and-so made that for me." An interesting and elegant piece of bench work: "that was made by (insert name here.)"

I honestly underestimated the level of cooperative construction that goes into making a layout great. I see this fellowship as a tremendous advantage of the hobby. It truly is a community.

While quantifying this may be difficult in recruiting new members, it certainly is key factor in member retention.

Three layouts are featured in this issue that showcase how successful this partnership can be. I was able to attend the open houses of John Bost, Arnold Eaves and Philip Stead. Thanks to all for giving me some great content.

Continuing on this theme, Charlie recognizes the craftsmanship demonstrated by our model contest winners. We also have a new *Master Model Railroader* in our Division, Brian Glock. Having seen his layout, it is a well-deserved recognition.

Tom focuses on how to protect our railroad investments by incorporating circuit breakers and taking the time to properly diagram the wiring

powering our layouts. Insurance can be cheap and far less frustrating.

A large portion of this issue is dedicated to the recent SouthEastern Region Convention in Lake Junaluska, NC held over the Memorial Day weekend. The Piedmont Division was well represented both in terms of attendance and special recognition at the banquet.

Much of the convention coverage comes from operating sessions held in conjunction with the convention. I included images from four sessions to show our members layouts they may have not seen. I also hope this will encourage even greater turnout at next year's convention in Chattanooga, TN.

Special thanks to Wayland Moore of Palmyra, VA who was kind enough to provide photos and copy for two operating sessions I missed. This is just another example of the wonderful community that makes up the model railroading hobby.

Because of the extensive 16-page coverage of the convention, the *Featured Member Layout* does not appear in this issue. It will be Joe Gelmini's incredible N-scale Great Georgia Southern that was hosted by his family in honor of Joe's birthday. The Q4 *Timetable* will permit the space it truly deserves.

—Jim Datka

*Timetable* Editor and Publisher

[jdatka@mindspring.com](mailto:jdatka@mindspring.com) 770 772-1538

### Scale Accessories • Figures • Animals • Buildings • Vehicles

From Z-Scale (1:220) to G-Scale (1:22.5) and everything inbetween!



**CatzPaw Innovations, LLC**  
[www.CatzPaw.com](http://www.CatzPaw.com) • Facebook: [catzpaw\\_164](https://www.facebook.com/catzpaw_164)

Visit our website to see our products and place your order!

Send \$8.00 US for a printed copy of our current catalog • 1255 Coan Dr, Locust Grove, GA 30248 USA

## PIEDMONT DIVISION TIMETABLE VOLUME 22 NUMBER 3

### EDITOR AND PUBLISHER

Jim Datka [jdatka@mindspring.com](mailto:jdatka@mindspring.com)  
770 772-1538

### ASSISTANT EDITOR

Tom Bohannon

### CONTRIBUTING EDITORS

Bob Wood Tom Gordon

### PHOTO EDITOR

James Bando

### CONTRIBUTORS

Sally Bando Walt Liles  
Charles Mason Wayland Moore

DEADLINE FOR THE QTR 4 2018 *TIMETABLE*:

**Wednesday, September 12, 2018**

Please send submissions to :

[jdatka@mindspring.com](mailto:jdatka@mindspring.com)





TUESDAY, JULY 10, 2018

6 PM BOD: 7-9 PM Piedmont Division Mtg

CLINICIAN: MIKE CUMMINGS TITLE: *Fallen Flags of the Southeast 1960 thru 1980*

An overview of the period of mergers, acquisitions and bankruptcies that forever changed the railroad industry in the Southeastern US.

BRING & BRAG: Bring your favorite Fallen Flag Engines or whatever you have been working on and want to share.

SATURDAY, JULY 14, 2018

All Day

BOY SCOUTS OF AMERICA

CHAIRPERSON: HOWARD GOODWIN

Summer 2018 BSA Railroading Merit Badge Clinic at Covenant Presbyterian Church, 2881 Canton Road, Marietta 30066

SUNDAY, JULY 15, 2018

1 PM to 5 PM

LAYOUT OPEN HOUSE: DAN MANSFIELD

O Scale (2 rail) Georgia Railroad set in 1952. Trains are managed by bulletins and verbal train orders from the dispatcher. All are invited to participate. Engines are equipped with sound decoders, operating via a Digitrax DCC system. 900 feet of O Scale track and 88 turnouts provide lots of operating opportunities. 4814 Wildrose Court, Kennesaw, GA 30152

SATURDAY, AUGUST 4, 2018

11 AM to 3 PM

LAYOUT OPEN HOUSE: RAYMOND STEWART

N scale layout is a freelanced version of the Central of Georgia "C" line from Experiment, GA to Griffin, GA. Time period is loosely from January 1950 to June 1963 prior to the Southern Railway merger. Scenery is near 40% complete, backdrop is painted Masonite, DCC Digitrax control.

His HO layout is a "proto-freelance" of the Illinois Central from the 1950s and is brought into current day under private ownership rather than the CN ownership. Yard trackage that is hand laid onto Central Valley tie strips and turnouts are a mixture of commercial components. No scenery, track laying is not complete and will operated with Digitrax DCC. Back drop is painted Masonite. Both layouts are under construction. 204 Southwoods Drive, Jasper, GA 30143

SUNDAY, AUGUST 5 through SUNDAY, AUGUST 12, 2018

NATIONAL MODEL RAILROAD ASSOCIATION CONVENTION - KANSAS CITY, MO

Westin Kansas City at Crown Center, 1 East Pershing Road, Kansas City, MO 64108  
For details go to [www.kc2018.org](http://www.kc2018.org)

TUESDAY, AUGUST 14, 2018

6 PM BOD: 7-9 PM Piedmont Division Mtg

CLINICIAN: LLOYD NEAL

TITLE: *When Atlanta Took the Train*

Lloyd, Assistant Librarian at the Southeastern Railway Museum, was part of the team that produced the recently published *When Atlanta Took The Train*. His presentation

starts with an overview of the railroads in Atlanta including photos of the passenger train stations they used. He will compare the Terminal Station and Union Station areas from the early 1970's with photos of the same locations in 2018. He will share some of his photos and stories of the Atlanta passenger train scene of the early 1970's that are not in the book. Copies of the book will be available for purchase.

BRING & BRAG: Bring your favorite Pictures of Atlanta Railroads, or whatever you have been working on and want to share.

SATURDAY, AUGUST 25, 2018

GOLDEN SPIKE MODEL TRAIN SHOW at Infinite Energy Forum, 6400 Sugarloaf Parkway, Duluth, Georgia 30097

TUESDAY, SEPTEMBER 11, 2018

6 PM BOD: 7-9 PM Piedmont Division Mtg

CLINICIAN: BILL FREY TITLE: *Train Collectors Association, Terminus Chapter (GA)*

TCA preserves an important segment of history—Tinplate Toy Trains—through research, establishment of collecting standards, education, community outreach and fellowship, and to promote the growth and enjoyment of the hobby.

BRING & BRAG: Bring your favorite Western and Atlantic RR items or whatever you have been working on and want to share.

FRIDAY, SEPTEMBER 21 through SATURDAY, SEPTEMBER 22, 2018

SOUTHEASTERN REGION MINI-MEET: MODEL RAILROADING IN THE DIGITAL AGE II

Hosted by: Headquarters Division, North District in Crossville, TN. For more info send email to [2018.NMRA.ser.minimeet@gmail.com](mailto:2018.NMRA.ser.minimeet@gmail.com).

SATURDAY, SEPTEMBER 22 through SUNDAY, SEPTEMBER 23, 2018

CROSSVILLE MODEL RAILROAD CLUB MODEL TRAIN EXTRAVAGANA Stone Memorial High School, 2800 Cook Road, Crossville, TN 38571-3272. For more info contact Patrick Taylor, CMRC President, at [crossvilletrainshow@gmail.com](mailto:crossvilletrainshow@gmail.com).

SATURDAY, SEPTEMBER 22, 2018

10 AM to 1 PM

LAYOUT OPEN HOUSE: PETER YOUNGBLOOD MMR

HO Scale Santa Fe Railway from La Junta, CO to Flagstaff, AZ, a geographic area representing three southwestern states. Modeled in 1967, the time of combined "Super Chief/El Capitan" first class passenger trains from Chicago to Los Angeles. Also a time of heavy freight traffic and the final year of mail-by-rail contracts. First generation diesels are giving way to generation power while Amtrak steadily advances on the horizon. 3563 Memorial Pkwy. NW Kennesaw, GA 30152

SATURDAY, SEPTEMBER 29, 2018

1 PM to 4 PM

TRAIN N CAMP - RAILROAD BENCH WORK CHAIRPERSON: PERRY LAMB

RSVP to [perry\\_lamb@mindspring.com](mailto:perry_lamb@mindspring.com)

Covenant Presbyterian Church, 2881 Canton Road, Marietta 30066

1981  
**RIVERDALE STATION**

*As Mark Twain might say,*

*"The rumors of my retirement have been greatly...  
...exaggerated"*



**DON'T LISTEN TO RUMORS!**

**Bob Branin** has been serving Model Railroaders for 36 years and - if the good Lord's willing and the creek don't rise - he will continue to run **THE** store for the Advanced Modeler for another 36 at least!

He's not going *anywhere!* Bob's **Riverdale Station** will continue to have metro Atlanta's best selection of brass and plastic locomotives, R-T-R and craftsman kit passenger and freight cars, scenery supplies and model buildings; track and power systems and a huge selection of detail parts and books and magazines.

**RIVERDALE STATION** remains open with everything you need to bring your model railroad to life!

**Open Tuesday - Saturday  
10 am - 6 pm**

**Riverdale Station Hobbies  
6632 Ga. Hwy 85  
Riverdale, GA 30274**

770-991-6085  
Fax: 770-907-4992

Rivstatinc@aol.com

**PIEDMONT**  **DIVISION**  
**LAYOUT OPEN HOUSE**

**Dan Mansfield's Georgia  
Railroad—Camak Division**

Sunday July 15, 2018 - 1 PM - 5 PM

4814 Wildrose Court  
Kennesaw, GA 30152  
(770) 420-9342

You are invited to experience operations on Dan's 1952 O Scale (2 rail) Georgia Railroad. Trains are managed by bulletins and verbal train orders from the dispatcher. All are invited to participate.



Engines are equipped with sound decoders, operating via a Digitrax DCC system. 900 feet of 2-rail O Scale track and 88 turnouts provide lots of operating opportunities.







# ACHIEVEMENT PROGRAM NEWS & MODEL CONTEST



Brian Glock, MMR #607

Brian Glock received his Master Model Railroader (MMR) plaque and certificate at the June meeting of the Piedmont Division. He becomes the 607th MMR in the NMRA and the fifteenth MMR in the Piedmont Division.

Brian is a superb modeler. His Sugar Valley & Sweetwater RR was featured in the March 2013 issue of Model Railroader magazine. He began work on this HO-scale railroad in 2003 and hand-laid the track using code 55 and code 70 rail. The layout contains both scratch-built and craftsman kit structures. Scratch-built timber trestles are prominent features on the layout. All rolling stock and engines are nicely weathered. The Sugar Valley & Sweetwater RR can be seen on the Piedmont Pilgrimage each fall.

Brian grew up on Long Island, New York. He retired from the Nassau County Police Force after a career in law enforcement. In 1996 he and his wife Marlan moved to the Atlanta area. Brian joined the NMRA in 2000 and is a member of the Chattahoochee Express operating group.

## April 2018 Model Contest

Eleven models were entered in the Piedmont Division's model contest. Two of the models received merit awards. Joe Nichols Jr. received a merit award for his model of a narrow gauge vacuum car based on a D&RGW rotary snow plow. Charlie Mason received a merit award for his scratch-built model of a Bordens milk tank car.

—Charles Mason MMR

Piedmont Division Achievement Program Chairman  
candmjason@att.net



Photos courtesy of James Bando



MMR #607 BRIAN GLOCK WITH WIFE MARLAN



ALAN MOLE AND GEORGE STICKEL



(continued on next page)





# ACHIEVEMENT PROGRAM NEWS & MODEL CONTEST



(continued from previous page)



REGIS BROOKS



DR. MICHAEL FLEMING



RAYMOND STEWART EARNS HIS CERTIFICATE OF ACHIEVEMENT ASSOCIATION VOLUNTEER



TOM TWYER



DR. JOE NICHOLS JR

Photos courtesy of James Bando



# PIEDMONT DIVISION TRAIN N' CAMP

## RAILROAD BENCH WORK

Saturday, September 29th  
1 PM to 4 PM

Covenant Presbyterian Church  
2881 Canton Rd  
Marietta, GA 30066

A solid foundation is required for every railroad to run reliably and trouble-free.

In this class, the participant will learn how to build a basic module that can be used in either a modular layout or the foundation for benchwork on a home layout.

Each student will construct a 2 X 4 foot section of benchwork, complete with framing and decking.

Various methods of either attaching the module to the wall or adding legs will also be covered.

Students will be provided a list of useful tools, however there will be tools available.

Registration for this class will be limited to 8 participants and registration is required. There is a nominal fee of \$15 for this class.

To register contact Perry Lamb at [Perry\\_Lamb@mindspring.com](mailto:Perry_Lamb@mindspring.com).



**The LARGEST Model Train Store in the Southeast!**

Visit us to shop the most complete selection of items available!



### Introducing Club Discounts!

**Model Train Club Discount 10%:** All members of **ANY** model train club ( NMRA, NGModurail, etc) Present a current membership card and receive a **10% Discount**.

**The TrainMaster Club 10%:** Join our very own membership program! Just \$25 annually, and members receive the **10% Model Train Club Discount** purchases for the Entire Year! Ask TrainMaster for details, sign up and start saving.

**Military Discount 5%:** All active duty or retired military. Present ID once at time of first purchase to receive discount for life.

**Model Train Club Discount 10%** can be used in combination with the **Military Discount 5%** for a total savings of **15%** off of all valid in-store purchases\*.

\*Valid In-Store purchases : Discounts are not applicable toward On-line sales, clearance items, Walters Monthly Flyer or other in-store sale/ special prices. .

601 East Main Street, Buford GA    678-546-3600    [www.trainmastermodels.com](http://www.trainmastermodels.com)

**“The great thing about model railways is you can be doing a bit of woodwork, a bit of painting, a bit of this, a bit of that, and having fun with your mates and you can listen to the radio. “**

—Roger Daltrey, lead singer of The Who



# GETTING WIRED

WITH TOM GORDON

## CIRCUIT BREAKERS

Do you ever have a short circuit on your layout? Does someone forget to throw a turnout and overrun the frog (from the diverging end of the turnout), or get a bit frisky and derail a car or two? If so, does the short circuit shut down your entire layout? Even worse, does the short melt your prize engine?

Having a short on the tracks is most annoying if it shuts down a whole operating session. They can also be very hazardous to your decoders. A short can theoretically send a voltage spike along the track that can potentially fry and/or 'reprogram' decoders. Also, a short can put the entire current capacity of your booster across a small area – creating plenty of heat. There are ways to help deal with shorts, and a few are somewhat affordable.

One thing that is important: Fuses will NOT effectively work when dealing with track shorts. Yes, they would technically work, but would cause more headaches than one would imagine. They are not fast enough (or sometimes too fast), not forgiving enough, and a real pain to constantly replace when tracking down a short.

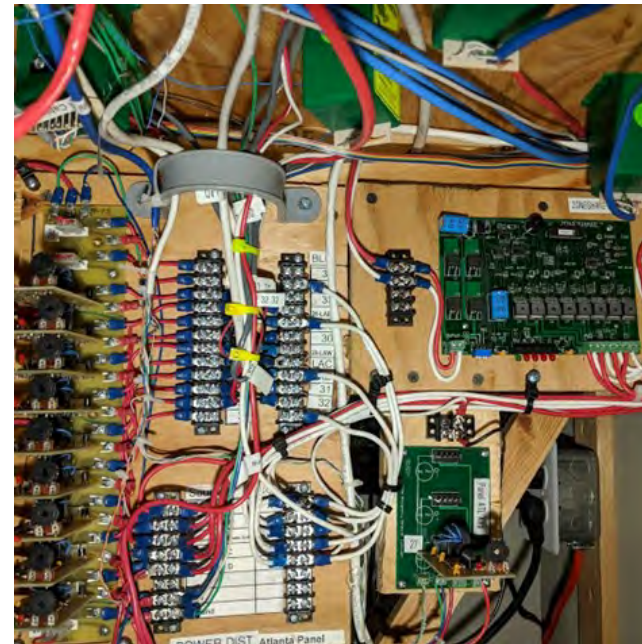
For many years, modelers have used headlight bulbs to indicate shorts. This works with practically any propulsion system (DCC, DC or AC), and is relatively inexpensive since all it involves is putting a bulb in series with the track. The drawbacks are that a bulb can only handle so much current, they reduce the voltage slightly, don't work well with automatic reversers and don't react quickly. They are, however, pocketbook friendly.

Some folks have started using 'frog juicers' that automatically throw tortoise turnout machines when an engine approaches a turnout thrown against it. This is a good, albeit expensive, solution for turnout alignment issues, but has several disadvantages for general usage. This does not work with manual turnouts, requires the use of a tortoise motor, can really mess up dispatch-controlled turnouts and, again, is not inexpensive. This approach also does not cover a derailment or other shorting situation, but for what it does, it is very good.

Personally, I prefer to arrange my layout into operating zones that are protected by solid state circuit breakers. Many DCC manufacturers make these devices. NCE, DCC Specialties, Digitrax and CVP make good solid-state breakers that work very fast (which is most important!). Do an internet search for DCC circuit breakers to find useful comments on different technologies. Solid state DCC circuit breakers should work with any DCC system, so don't worry about getting

one from your current DCC manufacturer. For what it's worth, you won't likely find CVP among your search since they only sell direct, but their quality and DCC compatibility is unsurpassed.

One thing that is very important regarding circuit breakers is that with sound decoders, there is often a rush of current to power up the circuitry (and capacitors.) This can become problematic when powering up the layout with several engines. Some DCC circuit breakers see this as a short and react accordingly. I use CVP products Zoneshare ([www.cvpusa.com/othersys\\_zshare\\_booster.php](http://www.cvpusa.com/othersys_zshare_booster.php)) as it is designed to work with sound decoders and a high current rush at startup. My layout is divided into 12 zones, which prevents a short in one zone from powering down another. Below is a photo of one of my 3 power distribution boards (they all have occupancy detection and circuit breakers). The circuit breaker board is in the upper right corner below the tortoise machine. And yes, I keep barrier terminal strip manufacturers in business.



When I have a short, an alarm sounds, and the affected zone LED is lit on the Zoneshare board. If the problem is not immediately apparent (99% of the time it is), I can check the LEDs which tell me in which zone the problem exists and refer to my layout documentation to see generally where to look. This removes over 90% of the layout from my search. Now I can focus on just what is causing the problem without trying lots of crazy things with the rest of the layout – like removing all the engines and rolling stock. For what it's worth, if

there is a short, the block involved will absolutely show that it is occupied (lighting the LED on the end of the occupancy card in the stack on the left) so finding a problem is usually very easy.

To take advantage of LED's (or headlight bulbs) to pinpoint a short, your layout needs good documentation to show where the wires go. This is important for many reasons, and by having good documentation, I spend very little time tracing shorts.

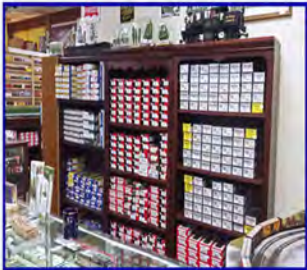
So good luck, happy installing, and remember – an ounce of circuit protection can save serious bucks in DCC decoders.



# BLUE OX TRAINS

425 Market Place Roswell GA 30075

LOCOMOTIVES - ROLLING STOCK - TRACK SUPPLIES  
STRUCTURE KITS - DETAIL PARTS - HOBBY TOOLS  
DCC DECODERS AND SYSTEMS - SCENERY MATERIALS  
\*OPERATING HO SCALE LAYOUT\*



Store hours - Monday - Saturday 10-6pm - Sunday - Call

*Keeping the Hobby Fun!*

Steve Funsten    [www.blueoxtrains.com](http://www.blueoxtrains.com)  
404-312-6467    [blueoxtrains@bellsouth.net](mailto:blueoxtrains@bellsouth.net)

**Support Our  
Advertisers!**

# TRAIN RIDES

NORTH GEORGIA LIVE STEAMERS  CONYERS & HIGHTOWER RAILROAD

Saturdays  
1:00-4:30

April 21, May 19  
June 23, Sept 8, Oct 13

1632 Centennial Olympic Parkway, Conyers, GA

2018 Schedule

## Engineer's Wish List



Embroidery  
Design & Gifts  
by On-Line Consign, Inc.



Sally Bando | 404.550.4816 | [sbandogeorgia@comcast.net](mailto:sbandogeorgia@comcast.net)

Machine embroidery designs & themes on shirts and gifts.  
Prices upon request. Company and group projects welcome.



678-361-4458

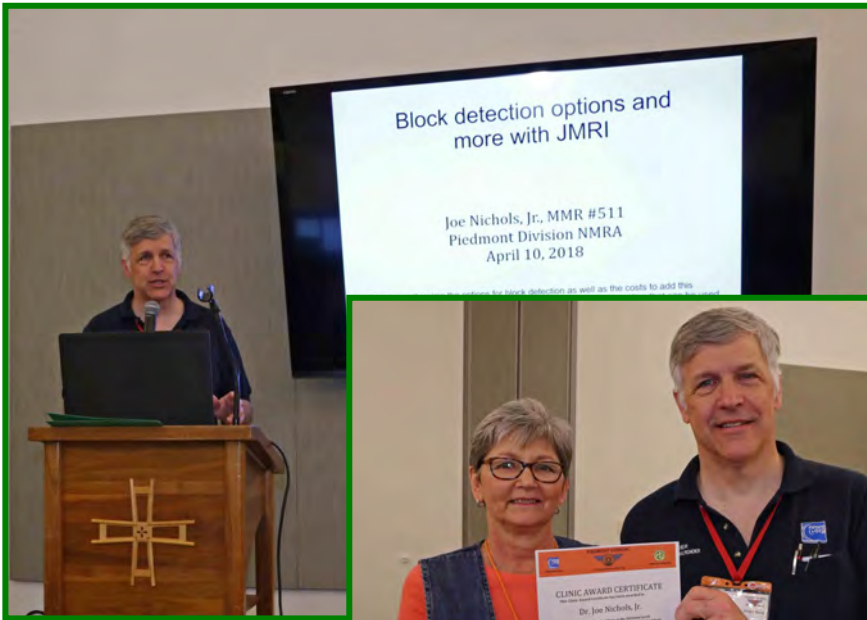
[GIZMOTRAINS@GMAIL.COM](mailto:GIZMOTRAINS@GMAIL.COM)





# PIEDMONT DIVISION'S APRIL MEETING

## DR. JOE NICHOLS, JR. MMR: BLOCK DETECTION OPTIONS AND MORE USING JMRI



Doug Munnell and son Timothy

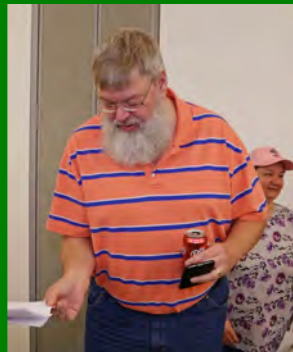


SALLY BANDO PRESENTS JOE WITH HIS CLINIC AWARD CERTIFICATE



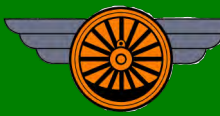
Robert Gibson and son Thomas

## MONTHLY RAFFLE CONTEST WINNERS



Photos courtesy of  
James Bando





# PIEDMONT DIVISION'S APRIL MEETING—BRING & BRAG



JIM HOBBS' NORFOLK & WESTERN 2-8-8-2 #995



PATRICK WALDRON'S PENNSYLVANIA RR PASSENGER CARS



STEVE LEYDON'S BOXCAR EXPLOSIVES WARNING SIGN CIRCA 1910



SCOTT CHATFIELD'S SOUTHERN RR PS-4 AND NEWYORK CENTRAL RR RS-1 #8109

Photos courtesy of James Bando



MIKE DEATON'S PRR BRASS DIESEL LOCO



MIKE FLEMING'S UNION PACIFIC RR GE U-25 DEMO LOCO



KEN STINETTE'S LOUISVILLE & NASHVILLE LOCOS



# PIEDMONT DIVISION'S MAY MEETING SPECIAL PRESENTATION: TONY KOESTER'S NICKEL PLATE ROAD



Normal meeting activities were kept to a minimum to enjoy Tony's wonderful presentation to a packed Piedmont Division house.







# PIEDMONT DIVISION'S JUNE MEETING DAVID & TYLER GELMINI'S REBUILDING SOUTHERN RAILWAY MOTORCAR NO. 8103



DR. JOE SR. SHOWING HIS  
CONTROLLER INSTALLATION



DR. MIKE DESCRIBES HIS  
GONDOLA WEDGE SNOWPLOW



FIRST TIME MEETING ATTENDEE  
MITCH DAVIS

Photos courtesy of  
James Bando



PIEDMONT DIVISION MASTER MODEL RAILROADERS AT JUNE MEETING



## A NEW GENERATION TAKES THE THROTTLE AT WILLIAM K. WALTHERS



May 30, 2018

Wm. K. Walthers, Inc. is pleased to announce that on September 4, 2018, Stacey Walthers Naffah will become its fourth President. Current President Phil Walthers will retire from day-to-day operations of the company but will remain Chairman of the Board and be available to work on special projects.

Stacey's promotion will begin a fourth generation of family leadership at Walthers, which recently celebrated 86 years of serving model railroaders. Founder Wm. K. was succeeded by son Bruce, and Phil succeeded Bruce as President in 1984.

Stacey has been with the company for 9 years, serving most recently as Vice President of Sales and Marketing. She is a past President of the Model Railroad Division of the Hobby Manufacturer's Association and is the current President of the World's Greatest Hobby, Inc., a non-profit industry organization which exists to promote the hobby of model railroading.

Phil, who has been with Walthers since 1972, has served as President of Walthers since 1984 and was elected to the HMA's Model Railroad Hall of Fame in 2010. During his tenure the company has grown to be the nation's largest exclusive model train distributor and also one of the nation's leading full-line model railroad manufacturers.

Stacey noted the impact that Phil has had on her career: "I am profoundly grateful for the time I've been able to work with my father preparing me for this role, and for his example, his guidance and his stewardship. The impact he has made on our business and on our industry cannot be overstated; the model railroading hobby is better for his thoughtful leadership over the course of his career."

Established in 1932, Wm. K. Walthers, Inc. is a distributor and direct seller of model trains, accessories, and related items from more than 200 manufacturers. Walthers also manufactures its own branded items for its WalthersProto, WalthersMainline, WalthersTrainline, Cornerstone, SceneMaster, Walthers Controls, and WalthersTrack lines. For more information see [www.walthers.com](http://www.walthers.com).



With nearly 6,000 sq. ft. dedicated to Model Trains in almost every gauge and scale, we probably have what you want in stock. And if we don't, we can get it for you quickly!



We also carry an enormous selection of "modelers tackle" such as tools, paints, airbrushes, paint brushes, masking tapes, glues, plastic parts, LEDs, track buildings, vehicles and other stuff you just can't do without.

Find us on Facebook,  
email us at [hobbytownusatrain@gmail.com](mailto:hobbytownusatrain@gmail.com)  
phone us at 770-426-8800,  
or better yet, just come to our store and see for yourself!  
We are open Mondays thru Saturdays from 10 am until 9 pm.  
On Sundays, we're open from Noon until 6.



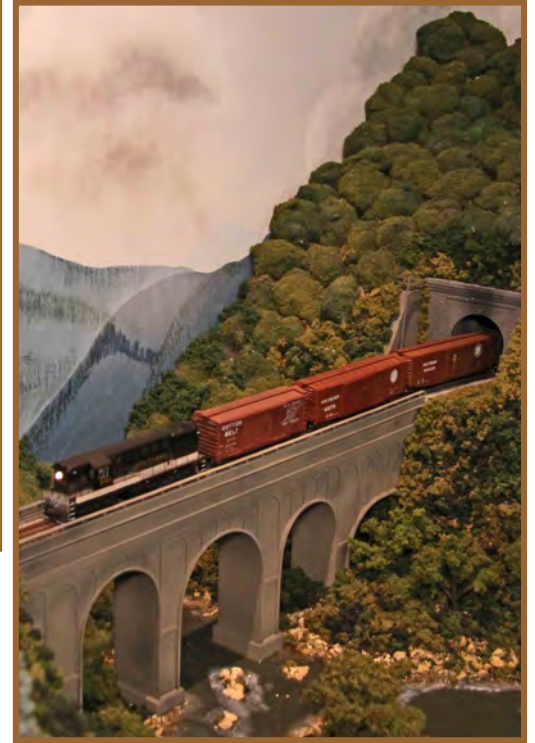
Bring your NMRA card for  
your 10% discount.

*Some exclusions apply. See store for details*





# PIEDMONT DIVISION LAYOUT OPEN HOUSE JOHN BOST'S HO SOUTHERN RAILROAD



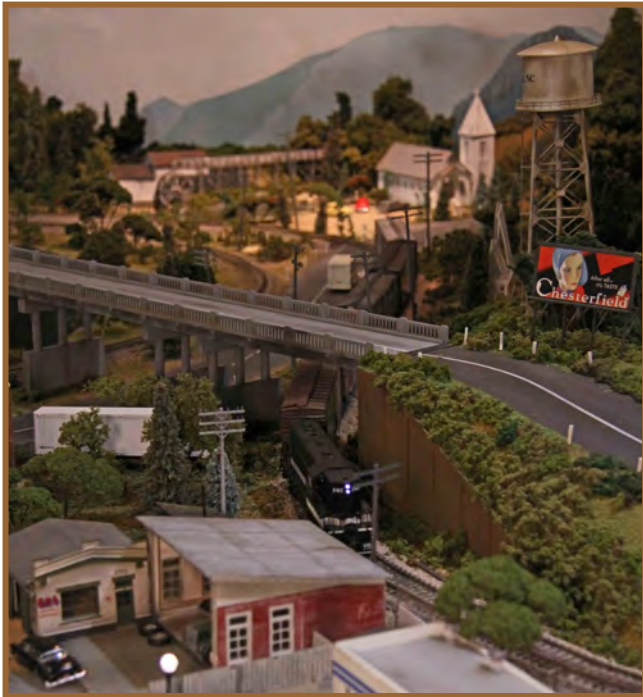
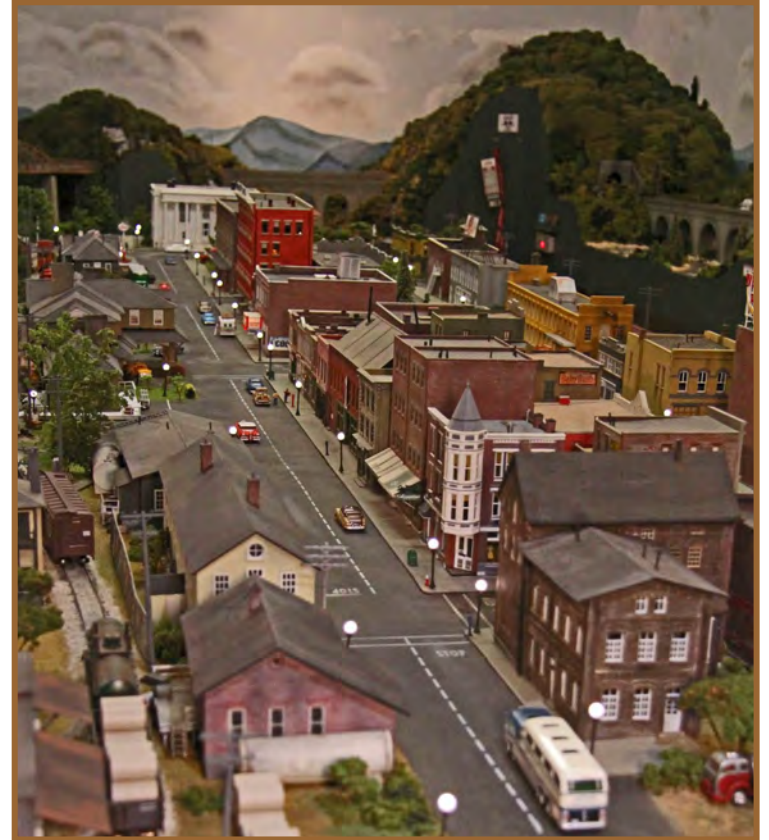
Photos by Jim Datka







# PIEDMONT DIVISION LAYOUT OPEN HOUSE JOHN BOST'S HO SOUTHERN RAILROAD







# PIEDMONT DIVISION LAYOUT OPEN HOUSE ARNOLD EAVES' N-SCALE TRI-STATE HOLDINGS & AFFILIATED LINES



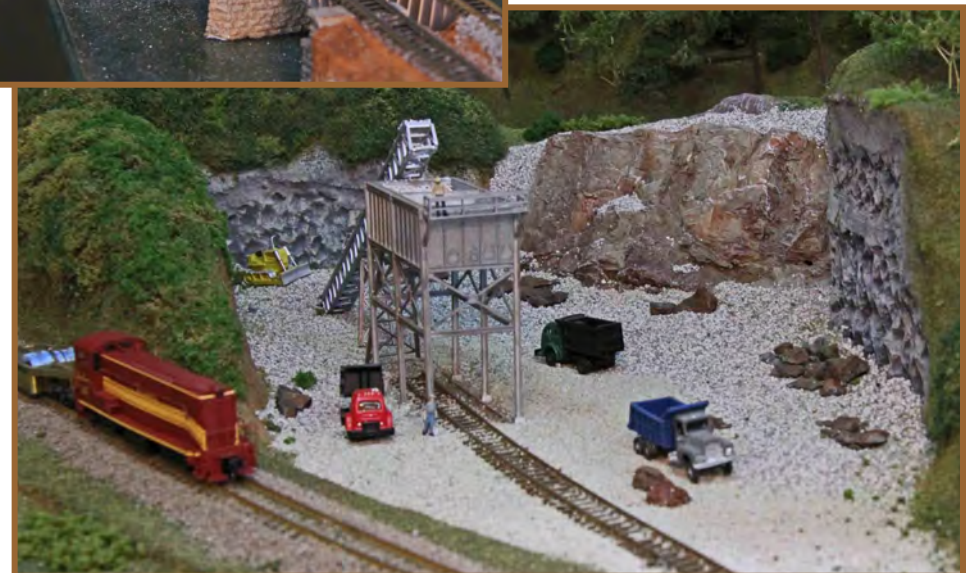
Photos by Jim Datka







# PIEDMONT DIVISION LAYOUT OPEN HOUSE ARNOLD EAVES' N-SCALE TRI-STATE HOLDINGS & AFFILIATED LINES







# PIEDMONT DIVISION LAYOUT OPEN HOUSE PHILIP STEAD'S ON3 DENVER AND RIO GRANDE RAILROAD



Photos by Jim Datka







# PIEDMONT DIVISION LAYOUT OPEN HOUSE PHILIP STEAD'S ON3 DENVER AND RIO GRANDE RAILROAD





# HANDS-ON LEARNING AT THE SCOUT'S MERIT BADGE CLINIC



The April 14 Scouts Merit Badge clinic was conducted at *The Southeastern Railway Museum* in Duluth. Perry Lamb instructed the scouts about Locomotive Power.

The SRM staff being great hosts, allowed Perry to open the doors of Georgia Railroad GP7 1026 for the day. This was a great opportunity for the scouts to see first-hand what makes a locomotive work.

-Rick Coble

# Legacy Station

Atlanta's Favorite Train Store



**Lionel \* MTH \* AtlasO\* HO \* G Scales**  
**Kid Friendly Store with 2 operating layouts**



Lionel & MTH Top Dealer  
Best Service Dept in Atlanta  
New Expanded HO Section  
Trains, Track, Accessories, Gifts  
Large Department 56 Inventory  
Knowledgeable & Friendly Staff  
11,000 SF of Selection  
Great Prices  
Many Children's Play Stations  
20 Years in Business  
Hours Mon- Sat 10-6

**Large 25 x 19**  
**operating layout**  
**with 6 trains!**

**770-339-7780**

**[www.legacystation.com](http://www.legacystation.com)**

4153 Lawrenceville Hwy NW # 12, Lilburn GA 30047  
(Kroger Shopping Center at Corner of Beaver Run & Hwy 29)



**\$10 Certificate**  
On Purchases of \$50

Not valid with any other offers.  
One Coupon per person.  
Expires Dec 1, 2017

**FREE Tote Bag**  
With purchase

Not valid with any other offers  
While supplies last..  
One Coupon per person  
Expires Dec 1, 2017



# SOUTHEASTERN REGION CONVENTION SEMINARS

## LAKE JUNALUSKA, NC MAY 25-26, 2018



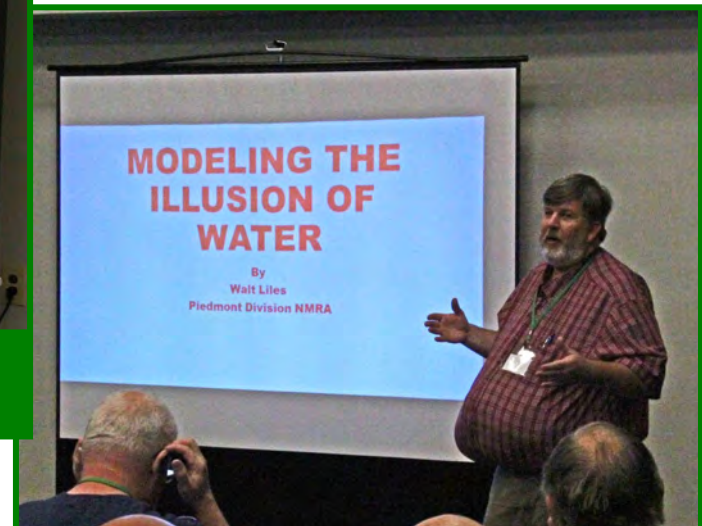
GREAT SMOKY MOUNTAINS  
LIVE UP TO THEIR NAME



BAR MILL'S JACK ELLIS ALWAYS DRAWS A CROWD



RICHARD SHOOK DEMONSTRATES THE POWER  
OF THE ARDUINO



WALT LILES SHOWS HOW WATER CAN BE  
ADDED TO A SCENE



Photos courtesy of Jim Datka



# SOUTHEASTERN REGION CONVENTION MODEL AND PHOTO CONTEST

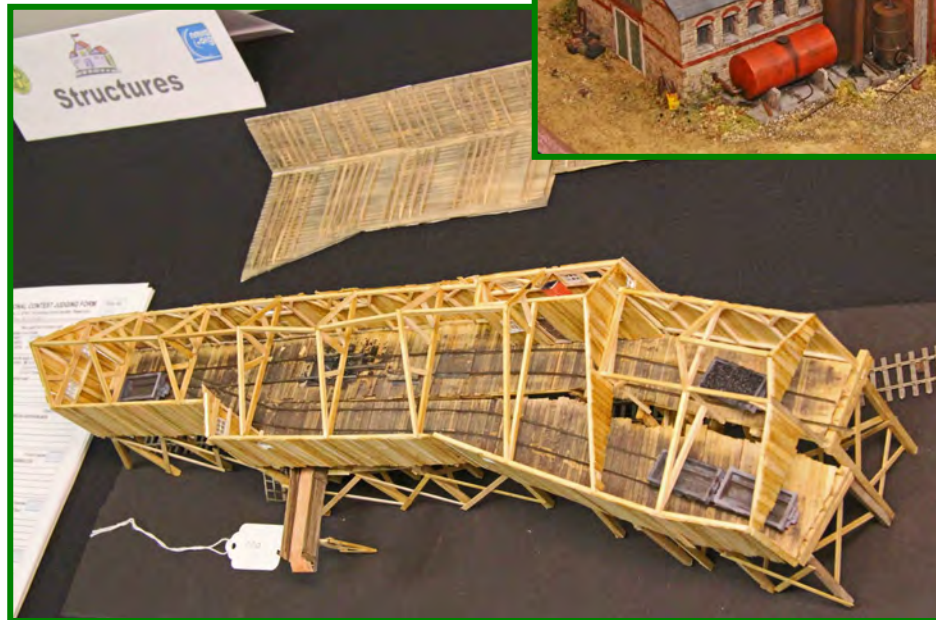
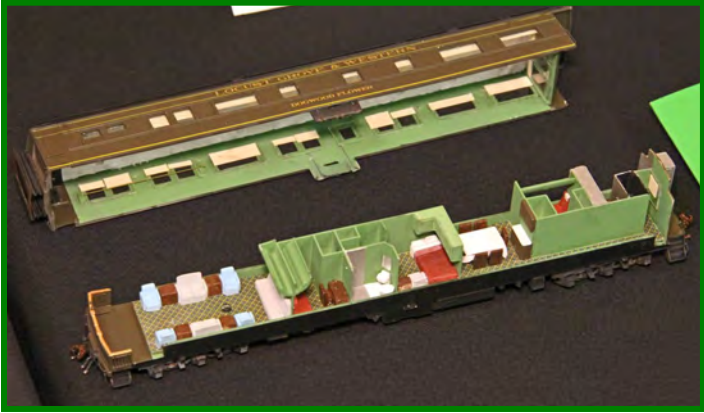


Photos courtesy of Jim Datka





# SOUTHEASTERN REGION CONVENTION MODEL AND PHOTO CONTEST



Photos courtesy of  
Jim Datka



# SOUTHEASTERN REGION CONVENTION RAILFANNING



Photos courtesy of Walt Liles



# SOUTHEASTERN REGION CONVENTION BANQUET



A SURPRISED AND (ALMOST) SPEECHLESS RANDALL WATSON RECEIVING THE VERN YARBROUGH AWARD FOR OUTSTANDING SERVICE TO THE REGION



DR JOE NICHOLS, SR. MMR RECEIVES A SPECIAL AWARD FOR LONG-TERM DEDICATION AND SUPPORT OF THE HOBBY



Photos courtesy of Walt Liles



# SOUTHEASTERN REGION CONVENTION BANQUET



SOUTHEASTERN REGION PRESIDENT  
ALAN MOLE PRESENTING AWARDS



SALLY BANDO RECEIVING THE CHAIRMAN'S  
AWARD FOR SERVICE TO THE REGION



JAMES AND SALLY BANDO

Photos courtesy of Walt Liles



PIEDMONT DIVISION MEMBERS ATTENDING THE CONVENTION BANQUET



# SOUTHEASTERN REGION CONVENTION

## OPS SESSION: TERRY KETCHAM'S WEST VIRGINIA AND SOUTHERN



TERRY KETCHAM KEEPING OPERATIONS  
RUNNING SMOOTHLY

Terry's 3-level HO layout is the most beautiful I have seen. "Highly detailed" is an understatement. Interiors of buildings are illuminated, fully furnished and staffed. You are drawn into every scene as the more you look, the more you find. The West Virginia vegetation is so green and lush I swear he must water it. It truly is exceptional. His layout was featured in *Great Model Railroads 2017*.

Coal and timber are the mainstays of its operation, but there are enough additional industries and sidings to keep several crews busy. The layout is designed for operations with clear labeling and track mapping. Everything an operator needs is right before him or her. It is an immersive experience.

— Jim Datka



Continued on  
next page

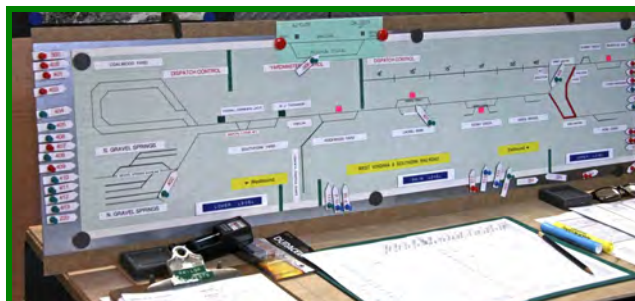
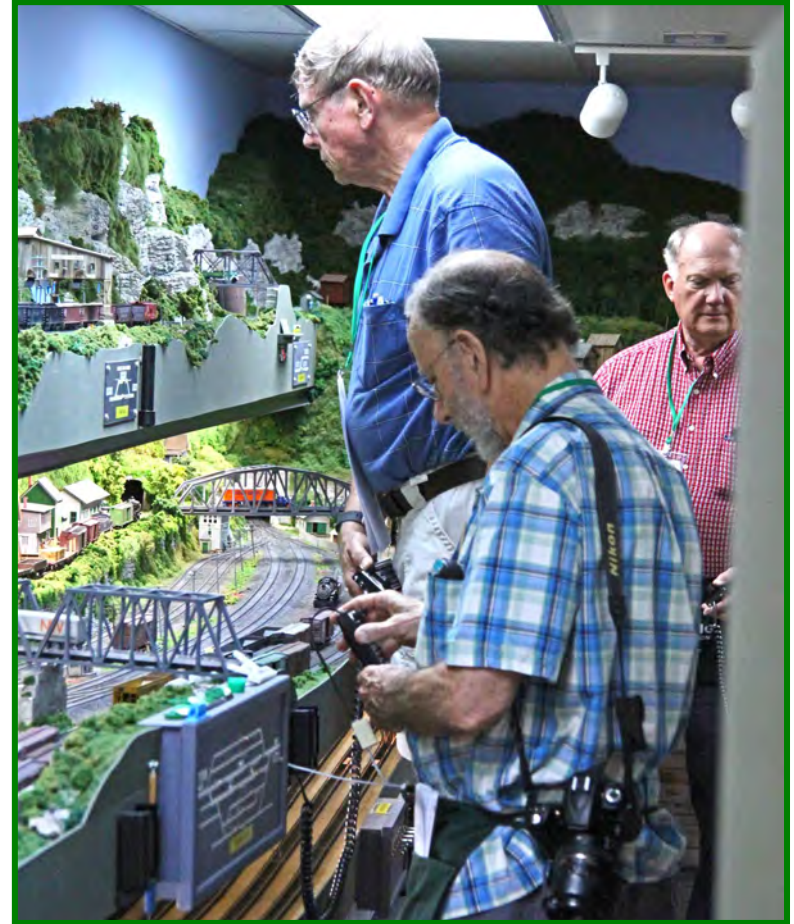


Wayland Moore



# SOUTHEASTERN REGION CONVENTION

## OPS SESSION: TERRY KETCHAM'S WEST VIRGINIA AND SOUTHERN

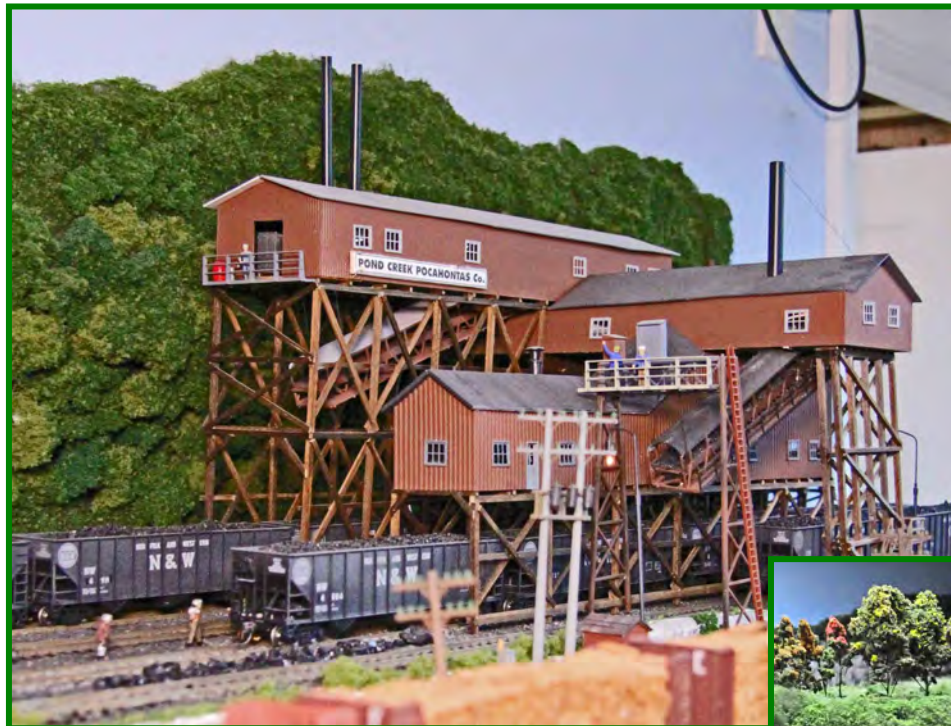


Continued on next page



# SOUTHEASTERN REGION CONVENTION

## OPS SESSION: TERRY KETCHAM'S WEST VIRGINIA AND SOUTHERN





# SOUTHEASTERN REGION CONVENTION

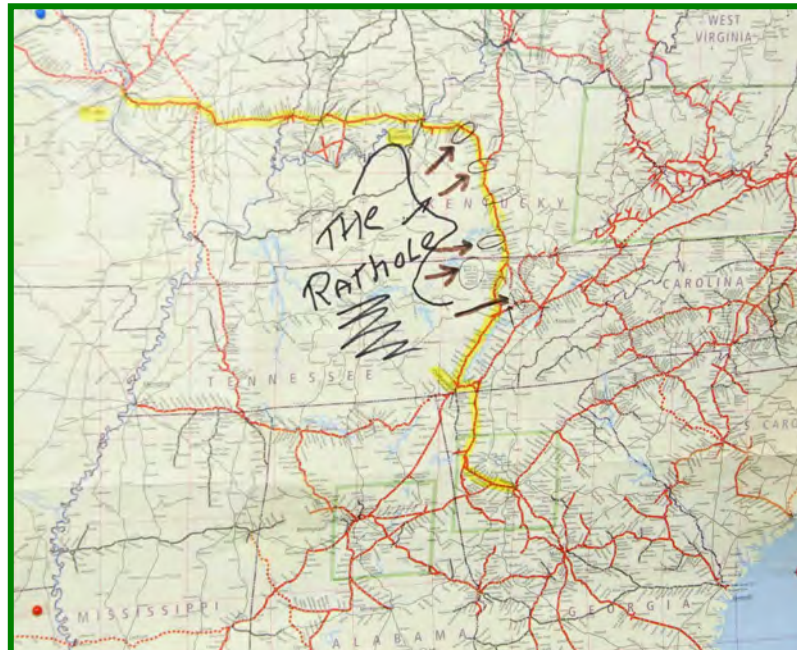
## OPS SESSION: JOE DUNN'S NORFOLK & SOUTHERN RATHOLE DIVISION



Joe's N scale point-to-point railroad models the contemporary operations from Chattanooga through the Sevier Yard in Knoxville, to the Louisville Yard, and ends with St. Louis staging in a separate room.

Joe has taken full advantage of what N scale offers in layout design. It features a mainline in excess of 7 scale miles, taking 30 minutes for a train to complete. The compact space allows for multiple sidings and industries while allowing unobstructed access for up to a dozen operators. The multiple industries and sidings are visually separated giving a sense of isolated communities along the line.

— Jim Datka



Continued on next page



# SOUTHEASTERN REGION CONVENTION

## OPS SESSION: JOE DUNN'S NORFOLK & SOUTHERN RATHOLE DIVISION



Wayland Moore



Wayland Moore



# SOUTHEASTERN REGION CONVENTION

## OPS SESSION: JOE DUNN'S NORFOLK & SOUTHERN RATHOLE DIVISION





# SOUTHEASTERN REGION CONVENTION

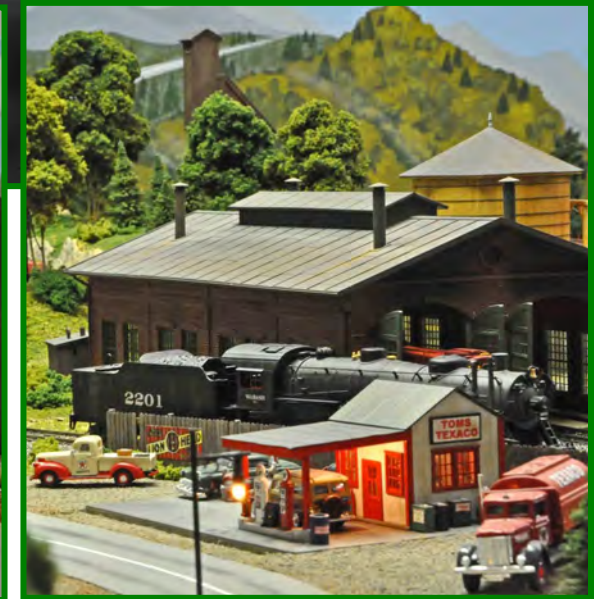
## OPS SESSION: DALE MARTELL'S MIDWEST AND SOUTH ATLANTIC



Dale's Midwest and South Atlantic is a nice compact layout consisting of two major loops to generate distance with an attached staging yard in a closet that had the doors removed. He was able to keep several crews busy by having some track common to both loops and the "off layout" staging. Operators really appreciated that the equipment ran well. Also, I was impressed with the screen saver photos on his computer. The photos were taken by Dale on his layout demonstrating that a large layout is not needed to look really nice, generate a lot of fun while minimizing how much has to go into maintenance. I suggest you ask him to send you some of his photos and he should submit them to a national publication.

—Wayland Moore

Photos courtesy of Wayland Moore





# SOUTHEASTERN REGION CONVENTION

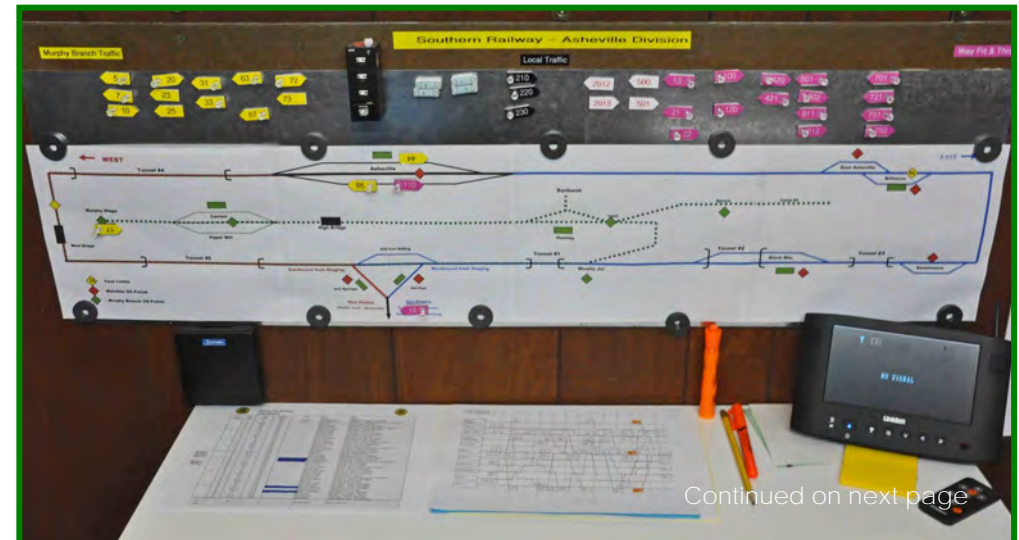
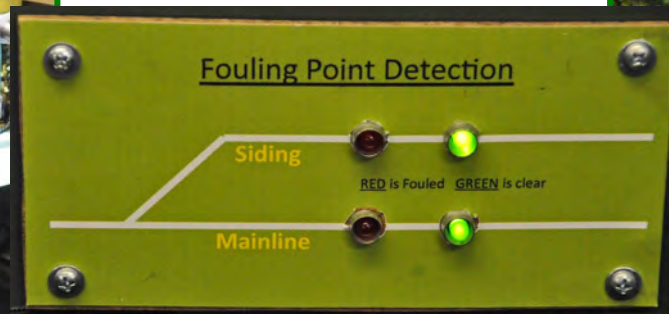
## OPS SESSION: WALLY BROWN'S SOUTHERN RR - ASHEVILLE DIVISION



I really like Wally's Southern Railway, Asheville Div., as it models the railroad and part of the US that I'm partial to. There is quite a bit of single track railroad in the 14' X 28' space based on the railroad around Asheville generally in the mid-50's. On the other side of the stairs is a dispatcher's office/staging yards. His sign-up sheet has another sheet next to it indicating the "complexity" of a particular job/train. FRS radios are used for the dispatcher and trains to communicate with each other. Wally's equipment looks and runs great and he is continuing to work on and finish sections of his scenery.

—Wayland Moore

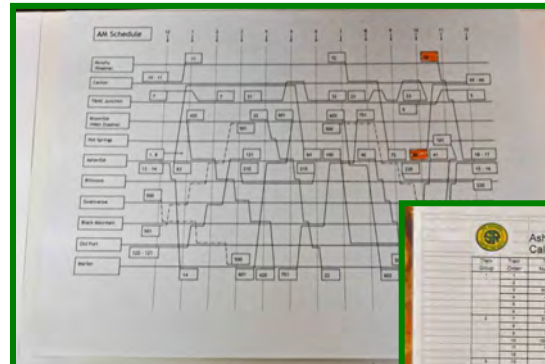
All photos of Wally's Southern RR  
courtesy of Wayland Moore





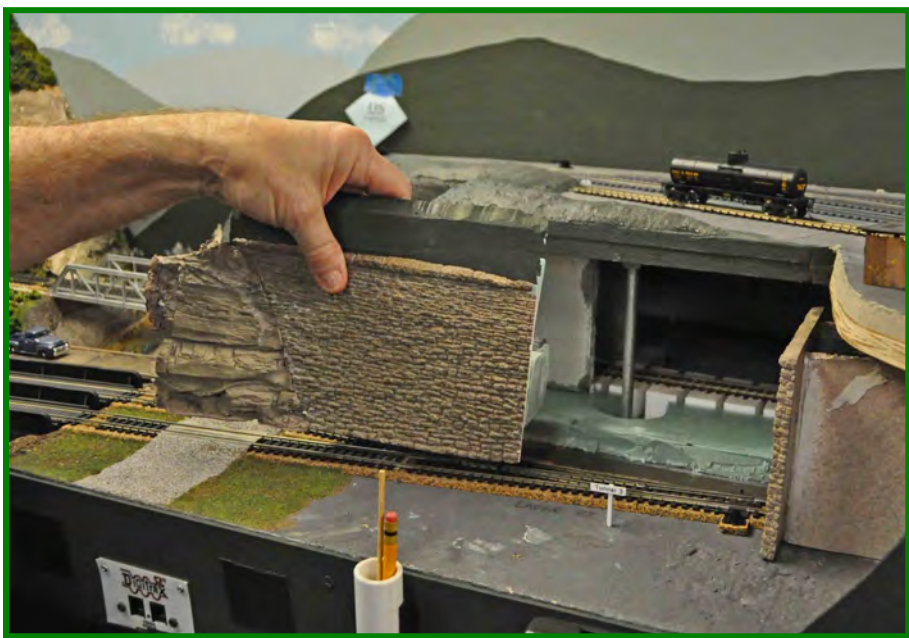
# SOUTHEASTERN REGION CONVENTION

## OPS SESSION: WALLY BROWN'S SOUTHERN RR - ASHEVILLE DIVISION



Asheville Division Call Board

Call	Time	Location	Operator	Notes
1	10:00	Asheville	John Smith	Normal
2	10:15	Asheville	Jane Doe	Normal
3	10:30	Asheville	Bob Johnson	Normal
4	10:45	Asheville	Alice Brown	Normal
5	11:00	Asheville	Charlie White	Normal
6	11:15	Asheville	Diana Green	Normal
7	11:30	Asheville	Frank Black	Normal
8	11:45	Asheville	Grace King	Normal
9	12:00	Asheville	Henry Lee	Normal
10	12:15	Asheville	Ivy Hill	Normal
11	12:30	Asheville	Jack Adams	Normal
12	12:45	Asheville	Karen Baker	Normal
13	13:00	Asheville	Liam Clark	Normal
14	13:15	Asheville	Mia Evans	Normal
15	13:30	Asheville	Noah Foster	Normal
16	13:45	Asheville	Olivia Garcia	Normal
17	14:00	Asheville	Peter Hall	Normal
18	14:15	Asheville	Quinn Ives	Normal
19	14:30	Asheville	Rachel King	Normal
20	14:45	Asheville	Sam Lee	Normal
21	15:00	Asheville	Tina Miller	Normal
22	15:15	Asheville	Uma Nunez	Normal
23	15:30	Asheville	Victor Ortiz	Normal
24	15:45	Asheville	Wendy Parker	Normal
25	16:00	Asheville	Xavier Quinn	Normal
26	16:15	Asheville	Yara Ramirez	Normal
27	16:30	Asheville	Zoe Scott	Normal
28	16:45	Asheville	Adam Taylor	Normal
29	17:00	Asheville	Bella Vance	Normal
30	17:15	Asheville	Carl Warren	Normal
31	17:30	Asheville	Dora Young	Normal
32	17:45	Asheville	Ethan Ziegler	Normal
33	18:00	Asheville	Fiona Bell	Normal
34	18:15	Asheville	George Black	Normal
35	18:30	Asheville	Hannah Brown	Normal
36	18:45	Asheville	Ivan Clark	Normal
37	19:00	Asheville	Jessica Evans	Normal
38	19:15	Asheville	Kyle Foster	Normal
39	19:30	Asheville	Laura Garcia	Normal
40	19:45	Asheville	Mark Hall	Normal
41	20:00	Asheville	Nancy Ives	Normal
42	20:15	Asheville	Oscar King	Normal
43	20:30	Asheville	Pamela Lee	Normal
44	20:45	Asheville	Quinn Miller	Normal
45	21:00	Asheville	Rachel Nunez	Normal
46	21:15	Asheville	Samuel Ortiz	Normal
47	21:30	Asheville	Tina Parker	Normal
48	21:45	Asheville	Uma Quinn	Normal
49	22:00	Asheville	Victor Ramirez	Normal
50	22:15	Asheville	Wendy Scott	Normal
51	22:30	Asheville	Xavier Taylor	Normal
52	22:45	Asheville	Yara Vance	Normal
53	23:00	Asheville	Zoe Warren	Normal
54	23:15	Asheville	Adam Young	Normal
55	23:30	Asheville	Bella Ziegler	Normal
56	23:45	Asheville	Carl Bell	Normal
57	00:00	Asheville	Dora Black	Normal
58	00:15	Asheville	Ethan Brown	Normal
59	00:30	Asheville	Fiona Clark	Normal
60	00:45	Asheville	George Evans	Normal
61	01:00	Asheville	Hannah Foster	Normal
62	01:15	Asheville	Ivan Garcia	Normal
63	01:30	Asheville	Jessica Hall	Normal
64	01:45	Asheville	Kyle Ives	Normal
65	02:00	Asheville	Laura King	Normal
66	02:15	Asheville	Mark Lee	Normal
67	02:30	Asheville	Nancy Miller	Normal
68	02:45	Asheville	Oscar Nunez	Normal
69	03:00	Asheville	Pamela Ortiz	Normal
70	03:15	Asheville	Quinn Parker	Normal
71	03:30	Asheville	Rachel Quinn	Normal
72	03:45	Asheville	Samuel Ramirez	Normal
73	04:00	Asheville	Tina Scott	Normal
74	04:15	Asheville	Uma Taylor	Normal
75	04:30	Asheville	Victor Vance	Normal
76	04:45	Asheville	Wendy Warren	Normal
77	05:00	Asheville	Xavier Young	Normal
78	05:15	Asheville	Yara Ziegler	Normal
79	05:30	Asheville	Zoe Bell	Normal
80	05:45	Asheville	Adam Black	Normal
81	06:00	Asheville	Bella Brown	Normal
82	06:15	Asheville	Carl Clark	Normal
83	06:30	Asheville	Dora Evans	Normal
84	06:45	Asheville	Ethan Foster	Normal
85	07:00	Asheville	Fiona Garcia	Normal
86	07:15	Asheville	George Hall	Normal
87	07:30	Asheville	Hannah Ives	Normal
88	07:45	Asheville	Ivan King	Normal
89	08:00	Asheville	Jessica Lee	Normal
90	08:15	Asheville	Kyle Miller	Normal
91	08:30	Asheville	Laura Nunez	Normal
92	08:45	Asheville	Mark Ortiz	Normal
93	09:00	Asheville	Nancy Parker	Normal
94	09:15	Asheville	Oscar Quinn	Normal
95	09:30	Asheville	Pamela Ramirez	Normal
96	09:45	Asheville	Quinn Scott	Normal
97	10:00	Asheville	Rachel Taylor	Normal
98	10:15	Asheville	Samuel Vance	Normal
99	10:30	Asheville	Tina Warren	Normal
100	10:45	Asheville	Uma Young	Normal
101	11:00	Asheville	Victor Ziegler	Normal
102	11:15	Asheville	Wendy Bell	Normal
103	11:30	Asheville	Xavier Black	Normal
104	11:45	Asheville	Yara Brown	Normal
105	12:00	Asheville	Zoe Clark	Normal
106	12:15	Asheville	Adam Evans	Normal
107	12:30	Asheville	Bella Foster	Normal
108	12:45	Asheville	Carl Garcia	Normal
109	13:00	Asheville	Dora Hall	Normal
110	13:15	Asheville	Ethan Ives	Normal
111	13:30	Asheville	Fiona King	Normal
112	13:45	Asheville	George Lee	Normal
113	14:00	Asheville	Hannah Miller	Normal
114	14:15	Asheville	Ivan Nunez	Normal
115	14:30	Asheville	Jessica Ortiz	Normal
116	14:45	Asheville	Kyle Parker	Normal
117	15:00	Asheville	Laura Quinn	Normal
118	15:15	Asheville	Mark Ramirez	Normal
119	15:30	Asheville	Nancy Scott	Normal
120	15:45	Asheville	Oscar Taylor	Normal
121	16:00	Asheville	Pamela Vance	Normal
122	16:15	Asheville	Quinn Warren	Normal
123	16:30	Asheville	Rachel Young	Normal
124	16:45	Asheville	Samuel Ziegler	Normal
125	17:00	Asheville	Tina Bell	Normal
126	17:15	Asheville	Uma Black	Normal
127	17:30	Asheville	Victor Brown	Normal
128	17:45	Asheville	Wendy Clark	Normal
129	18:00	Asheville	Xavier Evans	Normal
130	18:15	Asheville	Yara Foster	Normal
131	18:30	Asheville	Zoe Garcia	Normal
132	18:45	Asheville	Adam Hall	Normal
133	19:00	Asheville	Bella Ives	Normal
134	19:15	Asheville	Carl King	Normal
135	19:30	Asheville	Dora Lee	Normal
136	19:45	Asheville	Ethan Miller	Normal
137	20:00	Asheville	Fiona Nunez	Normal
138	20:15	Asheville	George Ortiz	Normal
139	20:30	Asheville	Hannah Parker	Normal
140	20:45	Asheville	Ivan Quinn	Normal
141	21:00	Asheville	Jessica Ramirez	Normal
142	21:15	Asheville	Kyle Scott	Normal
143	21:30	Asheville	Laura Taylor	Normal
144	21:45	Asheville	Mark Vance	Normal
145	22:00	Asheville	Nancy Warren	Normal
146	22:15	Asheville	Oscar Young	Normal
147	22:30	Asheville	Pamela Ziegler	Normal
148	22:45	Asheville	Quinn Bell	Normal
149	23:00	Asheville	Rachel Black	Normal
150	23:15	Asheville	Samuel Brown	Normal
151	23:30	Asheville	Tina Clark	Normal
152	23:45	Asheville	Uma Evans	Normal
153	00:00	Asheville	Victor Foster	Normal
154	00:15	Asheville	Wendy Garcia	Normal
155	00:30	Asheville	Xavier Hall	Normal
156	00:45	Asheville	Yara Ives	Normal
157	01:00	Asheville	Zoe King	Normal
158	01:15	Asheville	Adam Lee	Normal
159	01:30	Asheville	Bella Miller	Normal
160	01:45	Asheville	Carl Nunez	Normal
161	02:00	Asheville	Dora Ortiz	Normal
162	02:15	Asheville	Ethan Parker	Normal
163	02:30	Asheville	Fiona Quinn	Normal
164	02:45	Asheville	George Ramirez	Normal
165	03:00	Asheville	Hannah Scott	Normal
166	03:15	Asheville	Ivan Taylor	Normal
167	03:30	Asheville	Jessica Vance	Normal
168	03:45	Asheville	Kyle Warren	Normal
169	04:00	Asheville	Laura Young	Normal
170	04:15	Asheville	Mark Ziegler	Normal
171	04:30	Asheville	Nancy Bell	Normal
172	04:45	Asheville	Oscar Black	Normal
173	05:00	Asheville	Pamela Brown	Normal
174	05:15	Asheville	Quinn Clark	Normal
175	05:30	Asheville	Rachel Evans	Normal
176	05:45	Asheville	Samuel Foster	Normal
177	06:00	Asheville	Tina Garcia	Normal
178	06:15	Asheville	Uma Hall	Normal
179	06:30	Asheville	Victor Ives	Normal
180	06:45	Asheville	Wendy King	Normal
181	07:00	Asheville	Xavier Lee	Normal
182	07:15	Asheville	Yara Miller	Normal
183	07:30	Asheville	Zoe Nunez	Normal
184	07:45	Asheville	Adam Ortiz	Normal
185	08:00	Asheville	Bella Parker	Normal
186	08:15	Asheville	Carl Quinn	Normal
187	08:30	Asheville	Dora Ramirez	Normal
188	08:45	Asheville	Ethan Scott	Normal
189	09:00	Asheville	Fiona Taylor	Normal
190	09:15	Asheville	George Vance	Normal
191	09:30	Asheville	Hannah Warren	Normal
192	09:45	Asheville	Ivan Young	Normal
193	10:00	Asheville	Jessica Ziegler	Normal
194	10:15	Asheville	Kyle Bell	Normal
195	10:30	Asheville	Laura Black	Normal
196	10:45	Asheville	Mark Brown	Normal
197	11:00	Asheville	Nancy Clark	Normal
198	11:15	Asheville	Oscar Evans	Normal
199	11:30	Asheville	Pamela Foster	Normal
200	11:45	Asheville	Quinn Garcia	Normal

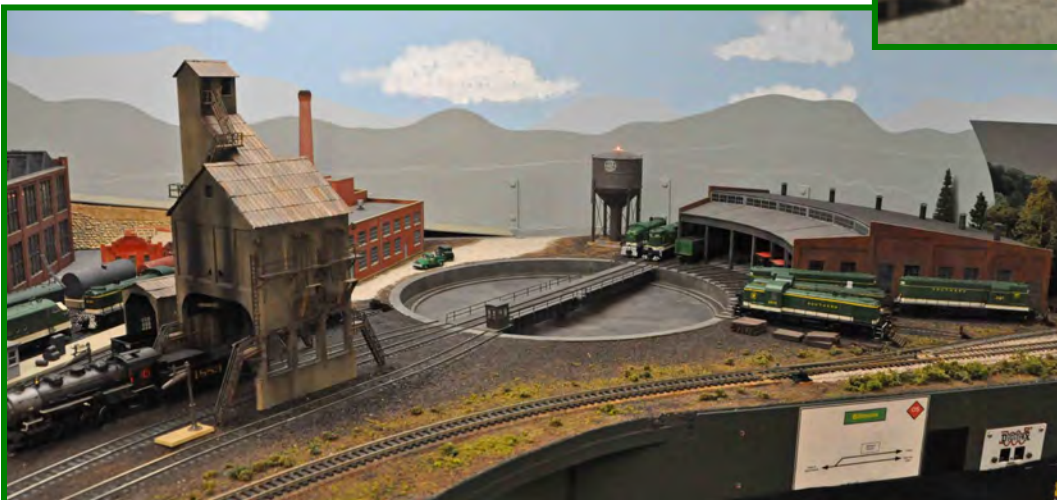
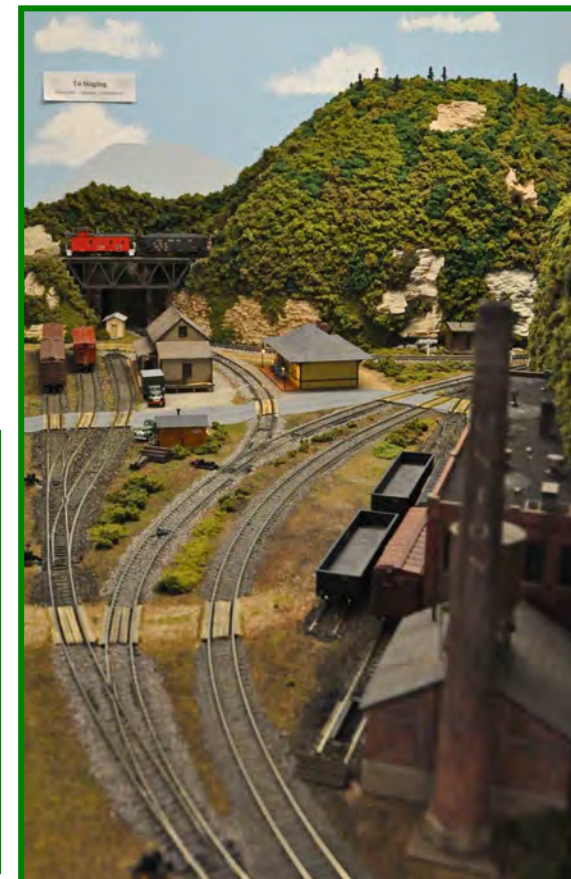
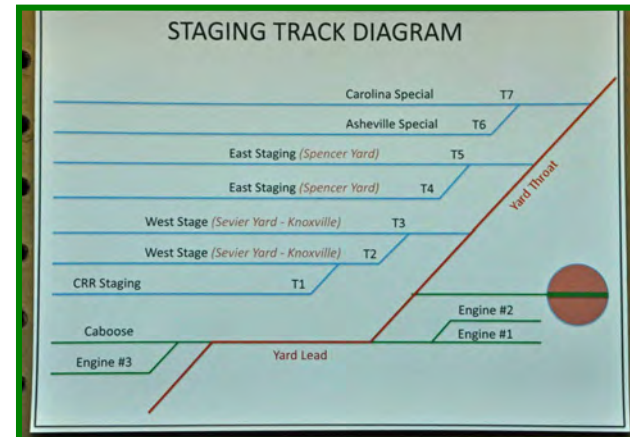


Continued on next page



# SOUTHEASTERN REGION CONVENTION

## OPS SESSION: WALLY BROWN'S SOUTHERN RR - ASHEVILLE DIVISION



### Train Power Requirement List

Locals			
Asheville Local *	(1, 3)	single unit	(as built)
Yard Service *	(8, 16)	single unit	(as built)
Millstone Local	(128, 128, 128)	single unit	(2-8-6, GP, 80)
<b>Trains</b>			
"Super" Train	(84, 84, 47)	double unit	(9 units, GP, 80)
Old Fort Train	(180, 180)	single unit	(2-8-6, GP, 80)
"B&C" Trainset	(18, 80)	single unit	(8-8-8)
CRS Trainset	(78, 78)	single unit	(87)
L&N Trainset	(18)	single unit	(87)
Log Train*	(5, 7)	single unit	(80)
<b>Passengers</b>			
Carolina Special	(12, 12)	double unit*	(8 or 9 units) or (7 units, 8-8-2)
Asheville Special*	(65, 64)	single unit	(8-8-2)
Montpelier Daily *	(141, 17)	single unit	(8-8-2)
<b>Freights</b>			
Wood Train	(84, 84, 84)	single unit**	(2-10-2, 2-8-2, 2-8-6, GP)
Mill Train	(84, 84, 84)	single unit**	(2-10-2, 2-8-2, 2-8-6, GP)
Mill Center	(72, 72)	double unit	(87)

\* Double double units or single Mountain locomotives  
 \*\* Locomotives based on class of train





TRADITIONAL CLUBS

The Railroad Model Club of Atlanta (O-Gauge)  
[www.oscale-atlanta.info](http://www.oscale-atlanta.info)  
 Terry Weldon 770 979-0473  
 Bob Peppel 770 934-4067  
 Meets every Monday at 7:30 PM

Tri-State Area Model Railroad, Inc. (HO-Gauge)  
[www.tsmri.org](http://www.tsmri.org)  
 Thomas Roskelly 828 361-2210  
[thomasroskelly@gmail.com](mailto:thomasroskelly@gmail.com)  
 Meets the first Monday of each month in Mineral Bluff

MODULAR CLUBS

Atlanta Interlocking Model Railroad Club (HO-Gauge)  
<http://home.earthlink.net/~wiles/>  
 Charlie Crawford, MMR 770 565-1845  
[cacrawford@bellsouth.net](mailto:cacrawford@bellsouth.net)

County RRoads (HO-Gauge)  
[www.countryrroadsmodular.com](http://www.countryrroadsmodular.com)  
 Morris Smith [sawdustmaker@mindspring.com](mailto:sawdustmaker@mindspring.com)  
[countryRRoads@earthlink.net](mailto:countryRRoads@earthlink.net)

Chattanooga Modular Modelers  
[www.chatanoogamodularmodelers.org](http://www.chatanoogamodularmodelers.org)  
 Mark McAllister 423 653-7487  
[mllmcallister@gmail.com](mailto:mllmcallister@gmail.com)

North Georgia LEGO Train Club  
[www.ngltc.org](http://www.ngltc.org) [questions@ngltc.org](mailto:questions@ngltc.org)  
 James Trobaugh 770 844-1076  
[james.trobaugh@ngltc.org](mailto:james.trobaugh@ngltc.org)

Metro Atlanta N-Scalers (NTRAK)  
 Larry Graus Roadmaster 770 237-0094  
 Charles Leak 404 262-2969  
 Meets the first Tuesday of each month at 7:30 PM

North Georgia Modurail (HO-Gauge)  
[www.northgeorgiamodurail.org](http://www.northgeorgiamodurail.org)  
 Jon Cook 770 993-9620

North West Georgia T-Trak Club  
 Kennesaw, GA  
 Jim Nealand 678-358-9171  
[casadiego86@gmail.com](mailto:casadiego86@gmail.com)

OPERATING GROUPS

Chattahoochee Express Operating Group  
 North Atlanta Metro  
 Gary Jarabek 770 509-6941 [gjarabek@bellsouth.net](mailto:gjarabek@bellsouth.net)  
 Chris White 770 594-2618

Atlanta Intown Model Railroaders  
 Inside-ish I-285  
 Tom Gordon 678 643-6022 [tgordon@mindspring.com](mailto:tgordon@mindspring.com)

Joint Railway Association of Georgia  
[www.dixierail.com](http://www.dixierail.com)  
 Norm Stenzel [stenzeln@mindspring.com](mailto:stenzeln@mindspring.com)  
 Meets most Fridays

North Atlanta Rail Barons  
[www.northatlantarailbarons.com](http://www.northatlantarailbarons.com)  
 Howard "HOorn" Goodwin 770 529-2103  
[horn69@bellsouth.net](mailto:horn69@bellsouth.net)

North County Interchange  
 I-85/I-985 corridor  
 Paul Rankin [paul\\_r@mindspring.com](mailto:paul_r@mindspring.com)

S-COG Southern Crescent Operating Group  
 South of I-20  
 David Gelmini 770 707-5019 [atcgel@gmail.com](mailto:atcgel@gmail.com)

OTHER CLUBS

Georgia Society of FerroEquinologists  
[www.trainweb.org/gsof/](http://www.trainweb.org/gsof/)  
 Robert Hunt 770 428-3864  
 Bob Hoenes 770 422-0081  
 Meets the second Friday of each month at 7:30 PM at  
 Covenant Presbyterian Church in Marietta

Georgia Association of Narrow Gaugers  
[www.groups.yahoo.com/group/georgiangangers](http://www.groups.yahoo.com/group/georgiangangers)  
[GeorgiaNGers@yahoo.com](mailto:GeorgiaNGers@yahoo.com)  
 Pat Turner 423 744-0429

Georgia Garden Railway Society  
[www.grs.info/](http://www.grs.info/)  
 Dan Michel [ggrschair@hotmail.com](mailto:ggrschair@hotmail.com)

OTHER CLUBS (continued)

Southern O-Scalers  
 Canton, GA  
 Dan Mason 470 385-6638  
[daniel@masonlawfirmga.com](mailto:daniel@masonlawfirmga.com)

Atlantic Coast S-Gaugers  
[www.trainweb.org/acsg](http://www.trainweb.org/acsg)  
 Bob Lacheen Home: 770 578-9937 Cell: 404 431-8032

Boomers  
 Athens/Gwinnett/Commerce areas  
 John Rieken [jrieken916@gmail.com](mailto:jrieken916@gmail.com)  
 Saturday mornings—email for specific dates

Jasper Roundhouse (All Scales)  
 Jasper, GA  
 Phil Stead [trainman07@aol.com](mailto:trainman07@aol.com)  
 Meets weekly at a member's home

North Atlanta O-Gauge Railroad Club  
 Roswell, GA  
 Jeff Pergl 770 516-6378

Volunteer Garden RR Club  
 Vines Botanical Garden  
 3500 Oak Grove Road  
 Loganville, GA 30052

Need your club information updated?  
 Please contact Jim Datka  
[jdatka@mindspring.com](mailto:jdatka@mindspring.com)  
 770 772-1538





## MAIN LINES

FULL-SERVICE HOBBY SHOPS IN THE PIEDMONT DIVISION AREA



Indicates in-store discounts for NMRA Members



Indicates Piedmont Division Member-Owned Establishment

### B & B HOBBY SHOP

1142 Athens Highway, Suite 107  
Grayson, GA 30017

Kimberly Franklin

770-972-2328

<http://www.bandbhobby.com/>

### BLUE OX TRAINS

425 Market Place  
Roswell, GA 30075

Steve Funsten

404-312-6467

[www.blueoxtrains.com](http://www.blueoxtrains.com)

### FREE TIME HOBBIES

4167 East First Street  
Blue Ridge, GA 30513

706-946-1120

[www.freetimehobbies.com](http://www.freetimehobbies.com)

### HOBBYTOWNUSA—DULUTH

3360 Satellite Blvd.  
Duluth, GA 30096

770-418-0850

[www.hobbytown.com](http://www.hobbytown.com)

### HOBBYTOWNUSA—KENNESAW

840 Barrett Lakes Blvd.  
Kennesaw, GA 30144

Michael Murray

770-426-8800

[www.hobbytown.com](http://www.hobbytown.com)

### LEGACY STATION TOYS TRAINS AND HOBBIES

4153 Lawrenceville Hwy, #12  
Lilburn, GA 30047

Brian Sheffield

770-339-7780

[www.legacystation.com](http://www.legacystation.com)

### RIVERDALE STATION

6632 Georgia Hwy 85  
Riverdale, GA 30274

Bob Branin

770-991-6085

[rivstatinc@aol.com](mailto:rivstatinc@aol.com)

### TRAINMASTER MODELS

601 East Main Street  
Buford, GA 30518

Michael Devaney

678-546-3600

[www.trainmastermodels.com](http://www.trainmastermodels.com)

## BACK SHOPS

MODEL TRAIN SERVICE & REPAIR

### AMERICAN FLYER REPAIR

165 Primrose Pass / Newnan, GA 30265

Jack Shaw

678-230-3184

### ATLANTA LOCOMOTIVE COMPANY

HO & N-scale Electrical & mechanical repairs  
3204 Timbercreek Cir / Roswell, GA 30076-8810

Ovidiu Trifanescu

[piko7403@yahoo.com](mailto:piko7403@yahoo.com)

678-230-3184

### Lathbury Electric Train Sales & Service

Authorized Lionel Service Center  
959 Highland Terrace NE #6, Atlanta, GA 30306

Johnathan Lathbury

(404) 892-3113

[jdtrain@aol.com](mailto:jdtrain@aol.com)

## FLAG STOPS

STORES WITH TRAIN-RELATED MERCHANDISE

### Southeastern Railway Museum

3595 Buford Hwy.  
Duluth, GA 3009

(770) 476-2013

[www.southeasternrailwaymuseum.org](http://www.southeasternrailwaymuseum.org)

### Southern Museum of Civil War and Locomotive History

2829 Cherokee Street  
Kennesaw, GA 30144

(770) 427-2117

[www.southernmuseum.org](http://www.southernmuseum.org)

## BRANCH LINES

OTHER HOBBY OUTLETS IN GEORGIA

### Bull Street Station

307 Kentucky Avenue  
Savannah, Georgia 31404

Ellie Tardif

(912) 236-4344

[sales@bullst.com](mailto:sales@bullst.com)

### Lindy's Trains

Multiple Locations

See web site for details

[www.lindystrains.com](http://www.lindystrains.com)

### Picayune Toys

2482 Jett Ferry Rd, 660  
Sandy Springs, Georgia 30338

(770) 395-0890

[Picayunetoys@bellsouth.net](mailto:Picayunetoys@bellsouth.net)

### Southern Digital Railroad Hobbies

5295 Hwy 78, Suite D-322  
Stone Mountain, Georgia 30087

(770) 929-1888

[www.sodigi.com](http://www.sodigi.com)