



PIEDMONT  DIVISION

TIMETABLE

VOLUME 26 NUMBER 2
Effective 12:01 AM ET Friday, April 1, 2022

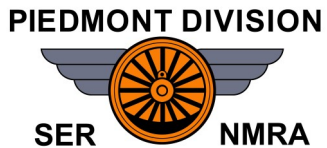
24TH ANNUAL PIEDMONT DIVISION MODEL TRAIN SHOW



PIEDMONT TO
HOST 2023
SOUTHEASTERN
REGION
CONVENTION



2022 MID-EASTERN
REGION CONVENTION
OCTOBER 20-23



PIEDMONT  DIVISION
LEADERSHIP

SUPERINTENDENT (2022) PERRY LAMB
perry_lamb@mindspring.com 770 218-9744

OPERATIONS (2023) TOM GORDON
TomGordonPiedmontDiv@gmail.com

FINANCE (2023) JIM FOLEY
james.foley@comcast.net 404 542-4660

ADMINISTRATION (2022) JIM DATKA
jdatka@mindspring.com 770 772-1538

PERSONNEL (2022) GARY FISH
bigfish600@gmail.com 770 846-2222

DIRECTORS AT LARGE

DOUG ALEXANDER (2023) JOHN STEVENS (2023)
doug_alexander@bellsouth.net snevets4@bellsouth.net
404 272-2986 678-873-3770

JIM HOBBS (2022) RAYMOND STEWART (2022)
jchobbs3@bellsouth.net raystew@yahoo.com
404 316-7557 678 925-3270

BOB KELSHAW (2023) JOE SULLIVAN (2023)
bkk151-UPTrainman@yahoo.com joesullivanx2377@gmail.com
678 224-1261 770 630-1915

HANK PRIMAS (2022) PETER THOMAS (2022)
hprimas@gmail.com peter3292004@gmail.com
301 706-7932 404 435-5684

SUPERINTENDENT EMERITUS

PETER YOUNGBLOOD MMR®
santaferailway@aol.com 770 966-1661

PIEDMONT DIVISION SUPERINTENDENT'S REPORT
SPRING 2022

Greetings and welcome to Spring, well, kinda! This morning there was a frost warning here where I live, but this afternoon, my watch currently tells me it is 71 degrees, F, outside. Go figure!

I just returned from riding the rails in Canada. There was light snow as we landed in Toronto and much heavier snow across Northern Ontario. The Plains of Canada were cold, but didn't have much snow any more, but the Canadian Rockies were beautiful, with snowcapped peaks, frozen

lakes
and riv-

ers, but not much new snow. Vancouver was chilly, and as you might expect, featured rain. Spring isn't quite ready in Canada yet, although the cherry trees were in full bloom in Stanley Park.

Now on to the Piedmont Division. The first of the month brought out the TRAIN 'N CAMP staff; Walt Liles, Jim Travis and Howard Goodwin, as they taught our annual installment of MODEL RAILROADING 101. The Camp was well attended and Walt had great things to say about the Camp on our Facebook page. Thanks, guys for teaching this. Our next Camp will be April 23rd. We have one slot left in building turnouts with Fast Tracks jigs. If you'd like to try out this useful skill, please register quickly. I've found turnout construction to be an enjoyable process and it produces great satisfaction.

(continued on next page)



DIVISION SUPERINTENDENT'S REPORT—SPRING 2022

(CONTINUED)

We have a great lineup of clinics and activities this quarter. Personally, I'm really looking forward to Jim and **Chris Davis'** clinic on Operations. Jim is a full-time dispatcher and I think his insights into what the real railroads do, but framed into model railroading, will be great. In May, yours truly will be showing you all how I turned Accurail open auto racks into cars to haul military equipment loads. I found some very interesting background material that's included in the presentation. In June, Scott Dunlap will be putting on a presentation on earning the NMRA Author Certificate. I'm also looking forward to this clinic as I think this will be my next AP certificate and I need information. Please watch our website for more details about our in-person, Division meetings.

Speaking of the Website, our long running project to rebuild our three websites, the Division, Pilgrimage and Model Train Show sites, is nearing the end. Bob Kelshaw and team have been working very hard on this project. The new Website is so good looking that other parts of the NMRA have looked at us as an example. I've navigated across our non-production site and it is really nice. The pages load quickly, feature rich content and color, allow us to edit the pages and content MUCH more easily, and work well on mobile devices as well as full computers. We'll even have a members-only portion of the site where there will be content aimed only at Division members. The project should be complete this quarter and we'll have all three sites up and running for our events this fall.

Please also remember that the Division will be hosting a MODEL and PHOTO CONTEST at the April meeting. It has been a long while since we've had a contest at one of our general meetings. I'm looking forward to seeing some great entries in both contests. Hopefully the long gap between contests means that there will be plenty of models and cool photographs to view.

Open houses have returned as well. April and June both have home layouts confirmed, but we are still looking for one for May. If you've made progress on your layout over the past couple of years, please let Tom Gordon know that you'd like to host a Division open house. He'll be happy to put you in a spot! Again, please watch our website and Facebook pages for more information.

Please be aware, and this is important; the membership is going to be asked to vote on a change to our bylaws. The past two elections have re-

quired the Board of Directors to suspend part of our bylaws to allow for electronic voting. We used the same method that both the SOUTHEASTERN REGION and National elections utilize, but we need to be able to formally incorporate this type of voting into our organization. It is NOT that we want to eliminate in-person voting at Division meetings but, the Board of Directors does want to allow for this type of voting, formally.

As a side benefit, we do get better turnout for the electronic elections as all one has to do is open an email and vote, from wherever you are on the planet! Official notification of the proposed change will appear in this issue of the Timetable. Please read and contact any member of the Board if you have any questions. The vote to modify our bylaws will be scheduled following the publication of the *TIMETABLE*, but we DO need YOUR support to make this change.

Well, its time to get back to reality. Cleaning, checking to make sure the layout is still standing and, sigh, laundry. No washing machine on the train!

I am looking forward to seeing you at our meetings. They are an important part of OUR Division, and the meetings aren't the same without you.

Until next quarter, Engage!

—Perry Lamb

SUPERINTENDENT, PIEDMONT DIVISION
perry_lamb@mindspring.com



WINNER OF THE TRAIN SET RAFFLE
DANNY SANDS



ASK NOT WHAT YOUR DIVISION CAN DO FOR YOU...

If you missed the **PIEDMONT DIVISION MODEL TRAIN SHOW**, you missed an excellent event. Congratulations to Hank Primas and Jim Travis for a show that was successful by every measure. Not only did vendor tables sell out, there was a waiting list for more which included tables being set up in the hallways! Sally Bando's marketing brought in record **PAYING** crowds. Peter Thomas coordinated the layouts on display and brought in new ones.

Thanks to everyone who contributed time and effort to make this a memorable and enjoyable show.

This show is the principle source of funds for our Division. Clinics and events, meeting spaces, websites, advertising and communications are all funded by this event. It is a deciding factor in determining our Division's activities and its future success.

If you did **NOT** volunteer to assist and help staff the many roles necessary to run a successful event, **PLEASE** consider signing up for next year's show. It is true that every organization relies on a handful of people who do so much for everyone else. But this is a big, active Division with members that love model railroading.

This is your opportunity to support one of the best regarded Divisions in the NMRA, and to promote and grow the hobby. It is also a very enjoyable way to spend a few hours talking with fellow hobbyists and inspiring the next generation of modelers. You will get more from the experience of volunteering than what you put into it.

There is an additional opportunity needing your support. The Piedmont Division is hosting the **SOUTHEASTERN REGION CONVENTION** on September 14-15, 2023. This will also be held at the Clarence Brown Conference Center in Cartersville. Walt Liles is Convention Chairman and is looking for clinicians, volunteers and layouts for operating sessions and open houses. He wants to focus on making this a socializing event starting with a meet-and-greet on Thursday. Who doesn't want to spend time talking with fellow hobbyists after 2 years of isolation? Model railroad enthusiasts from around the southeast will be coming here next year. You do not want to miss it.

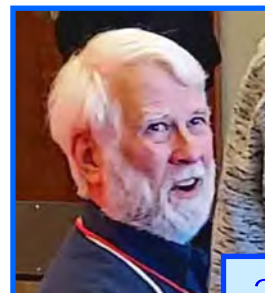
Finally—and without meaning to—my pictures from the show captured the very expressive face of our Director of Operations, Tom Gordon. It seemed to me that these expressions could be interpreted as his possible reactions to finding out everything his new role entails:



1. **SHOCK!**



2. **DISMAY!**



3. **ACCEPTANCE**

Sorry, Tom!, I was short on copy and this fit nicely. Hope you're having fun in sunny Spain!

—Jim Datka
TIMETABLE Editor and Publisher
jdatka@mindspring.com 770 772-1538

PIEDMONT DIVISION

COMMITTEE, PROGRAM AND ACTIVITY CHAIRS AND CONTACTS

ACHIEVEMENT PROGRAM
Charles Mason, MMR®
candmjason@att.net
770 993-1589

LIBRARY—VIDEOS
Jack Spangler
ajspan@comcast.net
404 539-3981

SPECIAL PROJECTS
Open

ADVERTISING AND MARKETING
Sally Bando
sbandogeorgia@comcast.net
770 928-2135

**MODEL RAILROAD AND
DIVISION HELP**
Ovidiu Trifanescu
memberaid@piedmont-div.org
678 230-3184

TIMETABLE
Jim Datka
jdatka@mindspring.com
770 772-1538

APPAREL/DIVISION STORE
Open

NAME TAGS
James Bando
horailroader@comcast.net
770 928-2135

TRAIN SHOW
Hank Primas
hprimas@gmail.com
301 706-7932

COFFEE COORDINATOR
John Falk
johnfalk50@gmail.com
678 361-4458

PIEDMONT PILGRIMAGE
Mike Deaton
mdeaton@mindspring.com
404-272-2070

TRAIN 'N CAMP
Perry Lamb
training@piedmont-div.org
770 331-1669

GOOD AND WELFARE
Chuck & Mary Ann
Hoesch
hoesch@brmemc.net
828 837-9686

RAFFLE LAYOUT
Walt Liles
wiles.crman@gmail.com
678 896-6311

WEB/IT COORDINATOR
Bob Kelshaw
bkk151-UPTrainman@yahoo.com
678 224-1261

LIBRARY—BOOKS
Stephen Leydon
booklibrary@piedmont-div.org
770 338-4966

REFRESHMENTS
Dr. Gary Fish
bigfish600@gmail.com
770 846-2222

**HELP OUR DIVISION
BY VOLUNTEERING!**

PIEDMONT DIVISION TIMETABLE VOLUME 26 NUMBER 1

EDITOR AND PUBLISHER
Jim Datka jdatka@mindspring.com
770 772-1538

CONTRIBUTORS
Jim Foley Tom Gordon
Perry Lamb Hank Primas

ASSISTANT EDITOR
Doug Alexander

DEADLINE FOR THE QTR 3 2022 TIMETABLE

CONTRIBUTING EDITORS

Wednesday June 15, 2022

PHOTO EDITOR
James Bando

Please send submissions to :

jdatka@mindspring.com



NMRA MEMBER BENEFITS

NMRA PARTNERSHIP PROGRAM

Like saving money?

Your membership can save you 5%, 10%, 15%, 20% and even up to 25% from more than 50 manufacturers and distributors of model railroad equipment, supplies and services.

Simply login to the NMRA.ORG website and highlight the "Benefits" tab on the member home page. Then click on "NMRA Partnership Program" in the pull down menu. This will take you to a page listing all of the participating vendors with detailed instructions on how to take advantage of their discounts. It even includes links to the vendor websites. Nothing could be easier!

Start saving today by taking advantage of this outstanding NMRA member benefit!

Piedmont Division monthly meetings are held at:

Holy Innocents' Episcopal Church

805 Mt. Vernon Highway, Atlanta, GA 30327



Division meetings are open to everyone. Come join us to see what fun Model Railroading is. See Division Calendar for details.

We hope to see you at our next meeting!

Scale Accessories • Figures • Animals • Buildings • Vehicles

From Z-Scale (1:220) to G-Scale (1:22.5) and everything inbetween!



CatzPaw Innovations, LLC

www.CatzPaw.com • Facebook: [catzpaw_164](https://www.facebook.com/catzpaw_164)

Visit our website to see our products and place your order!

Send \$8.00 US for a printed copy of our current catalog • 1255 Coan Dr, Locust Grove, GA 30248 USA

DIRECTOR OF FINANCE REPORT

IRS 501(c)(3) is ready for re-submission. The submission website is not working.

February transactions:

✓ INCOME	\$4,723.75
✓ Admin Income	\$123.75
> Meeting 'bucket' contributions	\$123.75
✓ Train Show Income	\$4,600.00
> Table Rental	\$4,600.00
✓ EXPENSE	-\$11,344.36
✓ Admin Expense	-\$1,656.50
> Accounting & Legal Fees	-\$30.00
> Meeting Room Rental	-\$300.00
> Software & Internet	-\$1,326.50
✓ SER 2023 Expense	-\$2,500.00
> Facility Rental	-\$2,500.00
✓ Train Show Expense	-\$7,187.86
> Facility Rental	-\$6,800.00
> Supplies	-\$387.86
TOTAL	-\$6,620.61

February assets change **-\$6,620.61**

	2021 12/31/21	2022 1/31/22	2022 2/28/22
✓ Assets	\$66,689.80	\$65,696.77	\$59,076.16
✓ Cash	\$66,689.80	\$65,696.77	\$59,076.16
Paypal	\$0.00	\$0.00	\$0.00
Piedmont Div Train Show	\$20,407.06	\$20,867.06	\$13,279.20
Piedmont Division	\$4,434.21	\$2,881.18	\$3,448.43
SER 2023 Convention	\$0.00	\$100.00	\$500.00
TIAA CDs	\$41,848.53	\$41,848.53	\$41,848.53
Liabilities	\$0.00	\$0.00	\$0.00

—Jim Foley
 Director of Finance
james.foley@comcast.net
 404 542-4660



With nearly 6,000 sq. ft. dedicated to Model Trains in almost every gauge and scale, we probably have what you want in stock. And if we don't, we can get it for you quickly!



We also carry an enormous selection of "modelers tackle" such as tools, paints, airbrushes, paint brushes, masking tapes, glues, plastic parts, LEDs, track buildings, vehicles and other stuff you just can't do without.

Find us on Facebook,
 email us at hobbytownusatrain@gmail.com
 phone us at 770-426-8800,
 or better yet, just come to our store and see for yourself!

We are open Mondays thru Saturdays from 10 am until 9 pm.
 On Sundays, we're open from Noon until 6.



Bring your NMRA card for your 10% discount.

Some exclusions apply. See store for details

BLUE OX TRAINS

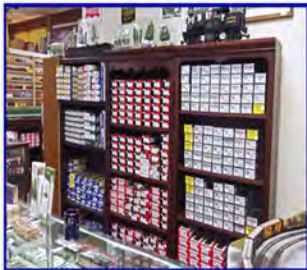
425 Market Place Roswell GA 30075

LOCOMOTIVES - ROLLING STOCK - TRACK SUPPLIES

STRUCTURE KITS - DETAIL PARTS - HOBBY TOOLS

DCC DECODERS AND SYSTEMS - SCENERY MATERIALS

OPERATING HO SCALE LAYOUT



Store hours - Monday - Saturday 10-6pm - Sunday - Call

Keeping the Hobby Fun!

Steve Funsten www.blueoxtrains.com
404-312-6467 blueoxtrains@bellsouth.net

**Support Our
Advertisers!**

2023 SOUTHEASTERN REGION CONVENTION OP SESSIONS



As I write this, the next Southeastern Region Convention, which will take place in Cartersville, Georgia on September 14-15, 2023, is still a year and a half away. But the planning has already begun and Walt Liles, the convention chairman, has most of his leadership team in place.

I am in charge of lining up and coordinating the op sessions for the event. So far, I have reached out to eleven individual layout owners plus one club, and nine have tentatively agreed to host sessions while the other three are still considering it. For comparison, that's one more than hosted sessions during the last year's SER Convention in South Carolina. If you are willing and able to host an op session during the convention and I have not already contacted you, please e-mail me. My address is scott@borail.net.

Op sessions will take place that Thursday evening, Friday morning, Friday afternoon, Friday evening, Saturday morning, Saturday afternoon, and Sunday morning. And, if there's enough interest, Thursday afternoon and Sunday afternoon as well. I would like to have enough sessions lined up so that every attendee can operate every day of the convention and multiple times a day if they so desire.

Here's what I'm looking for.

- Layouts that can be operated in a prototypical manner and can accommodate at least four guest operators.
- Op sessions should last at least two hours but not exceed four.
- Layouts should be within an hour's drive of the convention center in Cartersville. Those located further away will still be considered.

If you are willing and able to host an op session, please e-mail me as soon as possible. I look forward to hearing from you.

—Scott Dunlap

PROPOSED BYLAWS CHANGES BEING PUT TO VOTE AT APRIL 2022 DIVISION MEETING

To enable the Piedmont Division Board of Directors to authorize alternatives to in-person voting in the annual Board of Directors election, the Piedmont Division Board of Directors proposes changes to Article VI of the PIEDMONT DIVISION BYLAWS.

These changes were approved by the Piedmont Division Board of Directors at the March 2022 Board of Directors meeting. These changes shall be adopted by favorable vote of at least 2/3 of those Members in attendance at the April 2022 meeting.

Article 6.3 (Current)

A quorum must be present to conduct elections. Should a quorum not be present, elections shall be held at the next meeting at which a quorum is present.

Article 6.3 (Proposed)

The requirement of a quorum at a regular or special meeting of the Division does not apply to any meeting at which an election is held.

Rationale. Absence of a quorum at meeting at which an election is held prohibits holding the election at that meeting. A quorum is defined as sixty members in good standing in attendance. There is no guarantee of a quorum at any meeting.

Article 6.5 (Inserted after Article 6.4)

Alternatively, the Board of Directors may authorize another method of voting for the election no later than the September Board of Directors meeting. The Director of Administration shall communicate the method of voting to the membership no later than the October meeting by placing a notice in the Division publica-

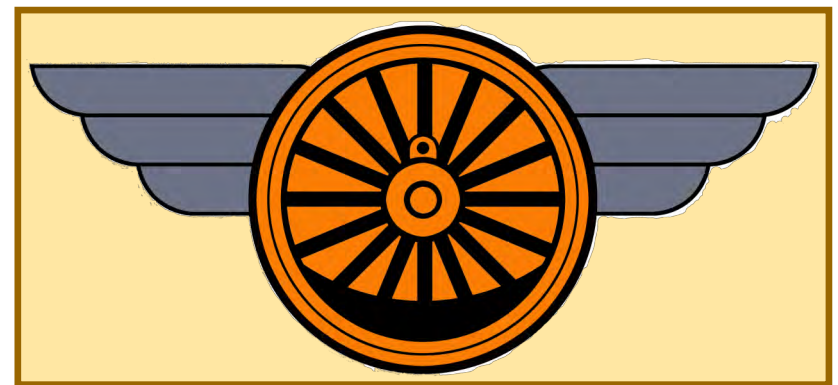
tion and by any other form of communications used by the Division.

Rationale. Elections should continue to be held in-person, but in the case of an event that will likely result in negative impact on attendance at a meeting at which an election is held, such as a public health emergency or loss of venue, the Board of Directors is required to suspend Robert's Rules to allow for another method of voting.

This proposed change enables the Board of Directors to easily authorize another method of voting, such as 100% remote voting, 100% voting through the US Postal Service, or hybrid in-person and remote voting. Membership will be notified of the method of voting before each election, no later than the October meeting.

Current Article 6.5-6.8 Becomes Article 6.6-6.9

The text of Article VI with the proposed changes is on the Division website at piedmont-div.org.





PIEDMONT DIVISION CALENDAR



TRAIN 'N CAMP: MODEL RAILROADING 101

SATURDAY, APRIL 2 12:30 PM to 4 PM
This clinic will show you how to get started and turn your train set into a model railroad. Experienced instructors will answer all of your questions. This class is free and open to the public. His Hands Church, 550 Molly Lane, Woodstock, GA 30189, For more info contact [train-
ing@piedmont-div.org](mailto:training@piedmont-div.org)

CHATSWORTH MODEL TRAIN EXPO

SATURDAY, APRIL 9 1 PM to 5 PM
Chatsworth Depot, 500 N. First Avenue, Chatsworth GA 30705

COASTAL RAIL BUFFS MODEL RAILROAD AND TRAIN SHOW

SATURDAY, APRIL 9 and SUNDAY, APRIL 10
Savannah, GA For info, go to www.coastalrailbuffs.com

PIEDMONT DIVISION MEETING

MODEL AND PHOTO CONTEST

TUESDAY, APRIL 12 6 PM BOD; 7-9 PM Division Mtg
CLINICIAN: JIM & CHRISTOPHER DAVIS TITLE: ADDING REALISM TO YOUR REALISTIC OPERATIONS How to operate when "things" go wrong on the railroad
BRING & BRAG: Structures, bring any structure you have finished, or are working on. or whatever you have been working on and want to share.

PIEDMONT DIVISION OPEN HOUSE

SATURDAY, APRIL 23 1 PM to 5 PM
LAYOUT OPEN HOUSE: JERRY MICHNEWICZ MMR®
HO Scale New York Central (Michigan Division) where Jerry worked as a Tower Operator from 1957 to 1960.

TRAIN 'N CAMP: HAND LAYING TRACK

SATURDAY, APRIL 23
Learn how to hand lay track using Fast Track jigs. For more info contact training@piedmont-div.org

PIEDMONT DIVISION MEETING

TUESDAY, MAY 10 6 PM BOD; 7-9 PM Division Mtg
CLINICIAN: PERRY LAMB TITLE: KITBASHING A BULKHEAD MILITARY VEHICLE TRANSPORTER
BRING & BRAG: Repainted Models, bring things you have purchased and repainted in other or updated road names, or whatever you have been working on and want to share.

MODEL RAILROAD DAYS

SATURDAY, JUNE 11 10 AM to 5 PM
SUNDAY, JUNE 12 1 PM to 5 PM
Southeastern Railroad Museum, 3595 Buford Hwy, Duluth, GA 30096
For more info go to train-museum.org

PIEDMONT DIVISION MEETING

TUESDAY, JUNE 14 6 PM BOD; 7-9 PM Division Mtg
CLINICIAN: SCOTT DUNLAP TITLE: EARNING THE NMRA AUTHOR CERTIFICATE Scott will discuss his experience in achieving this certificate, and how to put together all the paperwork necessary to earn the certification.
BRING & BRAG: TBA

PIEDMONT DIVISION OPEN HOUSE

DATE AND TIME TBA
LAYOUT OPEN HOUSE: LORI & PETER THOMAS
HO Dawson Shortline and Lori's Garden scale Cothran Valley Gardens

PIEDMONT DIVISION MEETING

TUESDAY, JULY 12 6 PM BOD; 7-9 PM Division Mtg
CLINICIAN: CRAIG KNOX TITLE: SHOOTING THE CRESCENT
Prototype videography and photography – how to do it, featuring footage and examples!
BRING & BRAG: TBA

Legacy Station

Atlanta's Favorite Train Store



Lionel * MTH * AtlasO * HO * G Scales
Kid Friendly Store with 2 operating layouts



Lionel & MTH Top Dealer
Best Service Dept in Atlanta
New Expanded HO Section
Trains, Track, Accessories, Gifts
Large Department 56 Inventory
Knowledgeable & Friendly Staff
11,000 SF of Selection
Great Prices
Many Children's Play Stations
20 Years in Business
Hours Mon- Sat 10-6

**Large 25 x 19
operating layout
with 6 trains!**

770-339-7780

www.legacystation.com

4153 Lawrenceville Hwy NW # 12, Lilburn GA 30047
(Kroger Shopping Center at Corner of Beaver Ruin & Hwy 29)



\$10 Certificate
On Purchases of \$50

Not valid with any other offers.
One Coupon per person.
Expires Dec 1, 2017

FREE Tote Bag
With purchase

Not valid with any other offers
While supplies last..
One Coupon per person
Expires Dec 1, 2017

Engineer's Wish List



Embroidery
Design & Gifts
by On-Line Consign, Inc.



Sally Bando | 404.550.4816 | sbandogeorgia@comcast.net

Machine embroidery designs & themes on shirts and gifts.
Prices upon request. Company and group projects welcome.



\$2

TRAIN RIDES

NORTH GEORGIA LIVE STEAMERS  CONYERS & HIGHTOWER RAILROAD

Saturdays
1:00-4:30

2022 Schedule
April 30, May 21, Oct 1, Nov 5

Cash Only

1632 Centennial Olympic Parkway, Conyers, GA

Cash Only



PIEDMONT DIVISION'S FEBRUARY MEETING

PETER YOUNGBLOOD: *FROM PLANNING TO CONSTRUCTION*



FROM PLANNING TO BENCHWORK AND BEYOND

Peter Youngblood, MMR

NMRA Piedmont Division
February 8, 2022

Peter provided a comprehensive overview of his legendary HO layout of the ATCHISON TOPEKA & SANTA FE's Colorado and Albuquerque Divisions, modeling from La Junta, CO to Flagstaff, AZ. This region of deep canyons and memorable vistas was the perfect theme for his artistic flair and creativity.

He presented a detailed explanation of the thinking behind the design, how he executed its construction and shared many of the tricks he learned along the way. His use of forced perspective alone would make for an interesting clinic.

A native of the Southwest, Peter showed how he applied this first-hand knowledge to provide subtle details that immersed visitors into the region and brought them back to 1967. The legendary *Super Chief* and *El Capitan* first class passenger trains were the perfect complement to his amazing layout.





PIEDMONT DIVISION'S FEBRUARY MEETING MEMBER RECOGNITIONS



Hank Primas receives the Division's
BRAKEMAN AWARD from Superintendent
Perry Lamb



Photos by James Bando

Photo by Jim Datka



Ken Stinnette receives a
GOLDEN SPIKE AWARD from
AP Chairperson Charlie
Mason MMR®

First Time Meeting Attendees



Terry Smith



Frank Perkowski



PIEDMONT DIVISION'S FEBRUARY MEETING BRING-AND-BRAG



Russ Bundy presented a garden scale flat car that he kit-bashed into a U.S. Army maintenance vehicle



Photos by James Bando

Photo by Jim Datka



PIEDMONT DIVISION'S MARCH MEETING

WALT LILES: SAVANNAH'S MEGA-RAIL TERMINAL



Photos by James Bando

Walt presented a fascinating glimpse into his "day job" working on the incredible inter-modal facility at the Port of Savannah. The huge expansion of this facility will increase capacity by 60% to 9.5 million 20-foot equivalent units (TEUs) of containerized cargo by 2025, and open Savannah to new rail markets in the Midwest, including Chicago, Cincinnati and St. Louis.

This expansion directly impacts the global supply chain challenges posed by COVID-19. The Mason Mega Rail Terminal which opened in November immediately increased rail capacity to and from the port by more than 30%. Since September, the port authority has seen a 60% reduction in the amount of time containers are on terminal, as major retailers have begun moving cargo away at a faster pace.

The scale of this project is incredibly huge and challenging. Walt explained that grading of the site is crucial due to the high-speed transfer of containers to and from ships, trucks and rail. Finished roadways need to be nearly flush with rail heads at crossings to avoid damaging loads while trucks and lifts speed across the site.

His knowledge of the intricacies of rail and trackage is a big advantage in understanding the needs of this inter-modal facility. His knowledge of modeling enabled him to present several examples of how interesting prototype details and designs could be added to our layouts. All-in-all an excellent presentation!



PIEDMONT DIVISION'S MARCH MEETING MEMBER RECOGNITIONS AND *BRING-AND-BRAG*

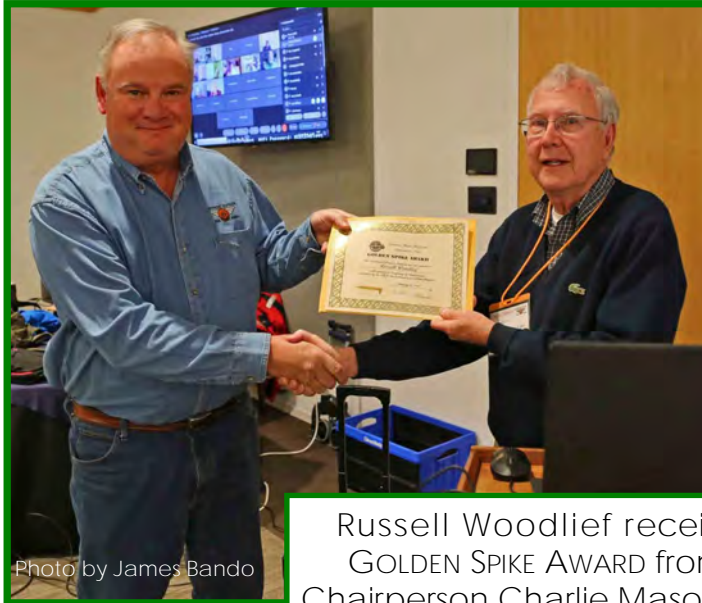


Photo by James Bando

Russell Woodlief receives a
GOLDEN SPIKE AWARD from AP
Chairperson Charlie Mason MMR®



Photo by Jim Datka

Jerry Michnewicz presented the *Henry Ford II* a coal ship that he scratch built from card stock, heavy paper and kit parts from a U.K. model. It is based on ships used by the Ford Motor Company that he saw operate on the River Rouge in his native Michigan. This is an incredible model that does not look like it was made largely from paper products. Outstanding craftsmanship!



Photo by Jim Datka



Photo by James Bando



PIEDMONT DIVISION MODEL TRAIN SHOW

MARCH 12TH AND 13TH IN CARTERSVILLE



LONG LINES WERE WAITING FOR THE SHOW TO OPEN



The PIEDMONT DIVISION MODEL TRAIN SHOW was a great success. Everyone attending had a great time. We had over 45 vendors and all tables were sold out. We actually had to stop the sale of tables before the show since they were all gone. No more showing up and hoping to get a table. Vendors were very happy with the show. Their sales were brisk and they were all smiles by the end of the show. They were so happy, that we have sold 50 tables for the next show.

The attendance was double that of the last show at better than 1400 paid customers. The place seemed full but there was still room for social distancing. We were successful and safe at the same time. Children of all ages had fun and we even picked up a few new Division members.

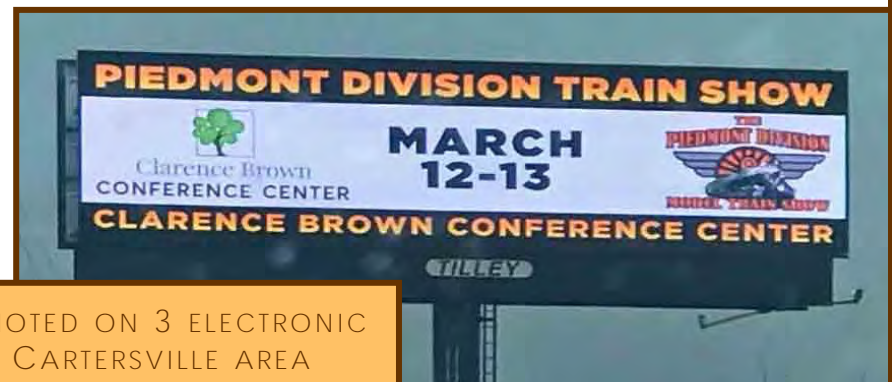
We made money. I will not disclose how much until we make our report to the Board and the membership on April 12 at our regular meeting. Fun was had by all and we made money. On to the next show in March 2023.

—Hank Primas
Train Show Chairperson

Continued on
next page

Article and Photos
by Jim Datka

OUR SHOW WAS PROMOTED ON 3 ELECTRONIC
BILLBOARDS IN THE CARTERSVILLE AREA





PIEDMONT DIVISION MODEL TRAIN SHOW—VENDORS



There was brisk business on the Show floor. Nearly every attendee left carrying bags of new found bargains. Two parties had to borrow carts to bring out their purchases.



Continued on next page



PIEDMONT DIVISION MODEL TRAIN SHOW—VENDORS



Continued on
next page



PIEDMONT DIVISION MODEL TRAIN SHOW—VENDORS



Continued on next page



PIEDMONT DIVISION MODEL TRAIN SHOW—VENDORS



Continued on next page



PIEDMONT DIVISION MODEL TRAIN SHOW—LAYOUTS



Operating layouts are always a big draw for children of all ages. This year's Show had many to enjoy in every scale, size and locale. The craftsmanship, imagination and novelty offers inspiration to modelers and lifelong memories for kids.



Continued on next page





PIEDMONT DIVISION MODEL TRAIN SHOW—LAYOUTS



Continued on next page



PIEDMONT DIVISION MODEL TRAIN SHOW—LAYOUTS

**Georgia Garden
Railway Society**
www.ggrs.info



Photo by James Bando

GGRS EVEN BROUGHT
THEIR BUBBLE BLOWING
BOX CAR



Continued on next page



PIEDMONT DIVISION MODEL TRAIN SHOW—LAYOUTS



THE LEGO CLUB ALWAYS PUTS TOGETHER AN INCREDIBLE AND COLORFUL DISPLAY



Continued on next page



PIEDMONT DIVISION MODEL TRAIN SHOW—LAYOUTS



Continued on next page



PIEDMONT DIVISION MODEL TRAIN SHOW—LAYOUTS



PETER THOMAS ORGANIZED AND COORDINATED ALL OF THE MODULAR LAYOUTS ON DISPLAY. HIS HO MODULAR LAYOUT OF 1920'S DAWSONVILLE AND GAINESVILLE IS MORE DETAILED EVERY TIME I SEE IT.



2022 MER CONVENTION: CAROLINA SPECIAL—LOOK SOUTH IN 2022

The next (and best) Mid-Eastern Region convention will be the *CAROLINA SPECIAL LOOK SOUTH 2022* on October 20-23, 2022. put those dates in your calendar! Although the last two [Mid-Eastern Region](#) conventions (both in Maryland) were definitely top-quality events, the Carolina Southern Division is well into planning for 2022, and is ensuring that your trip to Charlotte, North Carolina, will be way more than worthwhile! It will be downright memorable!

We have already planned several tours. First: on Thursday, October 20 starting at 12:30 PM we are offering a complete tour of the North Carolina Transportation Museum (NCTM) in Spencer (the former main maintenance facility of the Southern Railway, including the huge backshop, large roundhouse and turntable, many historic locomotives, railcars, automobiles, fire trucks, and airplanes. You can get a ride on one of NCTM's own passenger trains (pulled by one of their ex-Southern diesels), and if we are lucky, we may get to see an impressive visitor - the N&W 611 large 4-8-4 steam locomotive,

which comes to Spencer from Roanoke for regular maintenance. There is a well-stocked gift shop, and the NCTM is directly across the street from the best (and largest) model railroad store in the state, with its wide variety of inventory which includes many



TYPICAL HIGHLY DETAILED DIORAMAS YOU CAN EXPECT TO SEE IN THE CONTEST ROOM!



LOOK SOUTH IN 2022

small detail items for those of us into scratch building and dioramas.

Another is an all-day excursion tour on Friday, October 21 that will include visits to: the KK&L HO basement-sized layout of Neal Anderson MMR®; the restored freight/passenger depot and South-eastern Narrow Gauge & Shortline Museum in Newton, NC, (including their impressive collection of restored rail cars, diesel and steam locos,

and the Model Railroad Center with its O, HO, and N gauge layouts), followed by lunch at the Depot station, and then a couple more unusual layouts in the afternoon! That same day, there will also be an optional guided tour of the Lionel Corporation's development facility in Concord (a few miles north of Charlotte) where they always have something new coming up (both in O and HO).

This spectacular convention will be held at the University Hilton in North Charlotte (just off I-485), with a reduced room rate for convention attendees. Although we are not ready to accept registrations (will be soon), our website (www.carolinasouthern.org) will contain convention details. We have a very interesting Saturday evening banquet speaker lined up - again, more details soon!

I can't list all the many layouts available for visiting in this short article, but they are amazing, including Jack Parker's Piedmont & Western (HO mountain railroad) and Seth Gartner's NYC Piney Fork Branch (with its large detailed steel mill). Both of these were subjects of 2018 cover articles in *MODEL RAILROADER* magazine. Also Ed Smith's Erie Railroad (with its amazing 10-arch viaduct bridge), Neal Anderson's basement-filling KKL Railroad, and a number of excellent N gauge layouts.

Continued on next page



2022 MER CONVENTION: CAROLINA SPECIAL—LOOK SOUTH IN 2022

We are still arranging the clinics and presenters, and have over a dozen scheduled, again too many to list them all here. There is a "Make & Take" session on building a Section House or Crossing Shanty (including a list of tools to bring with you); Modeling the Dixie Flyer (ACL trains 5 & 6); Pullmans for Patients; Modeling Urban Scenes (based on NYC locations); and Model Railroad in a limited space – Downsizing to a shelf layout. The complete list will appear soon in our web site at www.carolinasouthern.org/MER2022.html, along with other important details such as registering/costs,

etc. However, you can make your room reservations now at the Hilton Charlotte University Place on this website and get our discount rate.

And you won't starve to death or have to eat grits and gravy, because there are numerous feeding



HO LAYOUT AT SOUTHEASTERN NARROW GAUGE & SHORTLINE MUSEUM, NEWTON MODEL RAILROAD CENTER

facilities close to the hotel, including: a barbecue restaurant, a Mediterranean restaurant, an Indian restaurant, a sandwich shop, a milkshake/ice cream bar (I will definitely try that!), and of course, a Chick-fil-A and a McDonald's. When you go to Google Maps you can see the location of the hotel and all of these nearby fine dining places. Expand the map a little and you will see Bojangles and several pizza places. What more could anyone want? You will also notice that the hotel is right off I-85 and close to I-485

It is also close to the light rail station, which quickly takes you to central Charlotte ("uptown") where your non-modelers can see some of the local attractions: the Mint Art Museum, Discovery Place Museum, Duke Energy Explorium, Charlotte Aviation Museum (at the airport), Billy Graham Library and Museum (very interesting!), Charlotte Motor Speedway (you can get really fast rides in NASCAR race cars driven by professional drivers), Concord Mills Mall (it's a big one), and evening dinner cruises on Lake Norman (largest lake in NC) aboard the "Lady of the Lake" or the "Catawba

Queen", plus many good restaurants in the area. I have done all of these things!

Other attractions include: the Top Golf driving range (use their clubs to hit near and far holes from a semi-indoor station), the Belk Theater shows, Charlotte Hornets NBA basketball, the Carowinds Amusement Park (roller coaster and other rides), the Duke Mansion, the Daniel Stowe Botanical Gardens, the Levine Museum of the New South, and the NAS-CAR Hall of Fame Museum (with its extremely realistic IMAX "rides"). But younger folks would enjoy visiting the Discovery Place Museum, the movies/arcades in Concord Mills Mall (not far from the hotel), and the white-water rafting, zip lines and hiking trails at the US National Whitewater Center (it is still warm down here in October!).

Finally, volunteers are always welcome to help so if anyone would be interested in hosting a clinic, feel free to contact our clinic chair at: 2022clinics@carolinasouthern.org

Make your plans now to attend the Carolina Special Look South 2022!!

—Bob Halsey



ATLANTIC COAST LINE GM E-6 AT NORTH CAROLINA TRANSPORTATION MUSEUM. THEY ALSO HAVE SEVERAL SOUTHERN DIESEL LOCOS, A COMPLETE PASSENGER TRAIN, AND A NUMBER OF FREIGHT CARS AND CABOOSSES, ALL OPERATING!



HO TURNTABLE AND ROUNDHOUSE AT AREA LAYOUT



TRADITIONAL CLUBS

The Railroad Model Club of Atlanta (O-Gauge)
www.oscale-atlanta.info
 Terry Weldon 770 979-0473
 Bob Peppel 770 934-4067
 Meets every Monday at 7:30 PM

Tri-State Area Model Railroad, Inc. (HO-Gauge)
www.tsmri.org
 Thomas Roskelly 828 361-2210
thomasroskelly@gmail.com
 Meets the first Monday of each month in Mineral Bluff

MODULAR CLUBS

Atlanta Interlocking Model Railroad Club (HO-Gauge)
<http://home.earthlink.net/~wiles/>
 Charlie Crawford, MMR 770 565-1845
cacrawford@bellsouth.net

Chattanooga Modular Modelers
www.chatanoogamodularmodelers.org
 Mark McAllister 423 653-7487
mimcallister@gmail.com

North Georgia LEGO Train Club
www.ngltc.org questions@ngltc.org
 James Trobaugh 770 844-1076
james.trobaugh@ngltc.org

Metro Atlanta N-Scalers (NTRAK)
 Larry Graus Roadmaster 770 237-0094
 Charles Leak 404 262-2969
 Meets the first Tuesday of each month at 7:30 PM

North Georgia Modurail (HO-Gauge)
www.northgeorgiamodurail.org
 Bruce Bliss 770-344-8963
brucew.bliss45@gmail.com

North West Georgia T-Trak Club
 Kennesaw, GA
 Jim Nealand 678-358-9171
casadiego86@gmail.com

OPERATING GROUPS

Atlanta Intown Model Railroaders
 Inside-ish I-285
 Tom Gordon 678 643-6022 tgordon@mindspring.com

Boomers
 Athens/Gwinnett/Commerce areas
[John Rieken jrieken916@gmail.com](mailto:John.Rieken@jrieken916@gmail.com)
 Saturday mornings—email for specific dates

Chattahoochee Express Operating Group
 North Atlanta Metro
 Chris White 770 594-2618

Joint Railway Association of Georgia
www.dixierail.com
[Norm Stenzel stenzeln@mindspring.com](mailto:Norm.Stenzel@stenzeln@mindspring.com)
 Meets most Fridays

North Atlanta Rail Barons
www.northatlantarailbarons.com
 Howard "HOrn" Goodwin 770 529-2103
horn69@bellsouth.net

North County Interchange
 I-85/I-985 corridor
[Paul Rankin paul_r@mindspring.com](mailto:Paul.Rankin@paul_r@mindspring.com)

S-COG Southern Crescent Operating Group
 South of I-20
 David Gelmini 770 707-5019 atcgel@gmail.com

OTHER CLUBS

Atlantic Coast S-Gaugers
www.trainweb.org/acsg
 Bob Lacheen Home: 770 578-9937 Cell: 404 431-8032

Georgia Association of Narrow Gaugers
fecrr@mindspring.com
 Pat Turner 423-453-0468

Georgia Garden Railway Society
www.ggrs.info
 Ted Yarbrough
yarbrought@charter.net

OTHER CLUBS (continued)

Georgia Society of FerroEquinologists
www.trainweb.org/gsof/
 Robert Hunt 770 428-3864
 Bob Hoenes 770 422-0081
 Meets the second Friday of each month at 7:30 PM at
 Covenant Presbyterian Church in Marietta

Jasper Roundhouse (All Scales)
 Jasper, GA
[Phil Stead trainman07@aol.com](mailto:Phil.Stead@trainman07@aol.com)
 Meets weekly at a member's home

North Atlanta O-Gauge Railroad Club
 Roswell, GA
[Jeff Pergl 770 516-6378](mailto:Jeff.Pergl@770.516.6378)

Southern O-Scalers
 Canton, GA
[Dan Mason 470 385-6638](mailto:Dan.Mason@470.385.6638)
daniel@masonlawfirmga.com

Volunteer Garden RR Club
 Vines Botanical Garden
 3500 Oak Grove Road
 Loganville, GA 30052

Need your club information updated?
 Please contact Jim Datka
jdatka@mindspring.com
 770 772-1538



Around the Shops

MAIN LINES

FULL-SERVICE HOBBY SHOPS IN THE Piedmont Division Area



Indicates in-store discounts for NMRA Members



Indicates Piedmont Division Member-Owned Establishment

B & B HOBBY SHOP

1142 Athens Highway, Suite 107
Grayson, GA 30017

Kimberly Franklin

770-972-2328

<http://www.bandbhobby.com/>

BLUE OX TRAIN

425 Market Place
Roswell, GA 30075

Steve Funsten

404-312-6467

www.blueoxtrains.com

FREE TIME HOBBIES

4167 East First Street
Blue Ridge, GA 30513

706-946-1120

www.freetimehobbies.com

HOBBYTOWNUSA—DULUTH

3360 Satellite Blvd.
Duluth, GA 30096

770-418-0850

www.hobbytown.com

HOBBYTOWNUSA—KENNESAW

840 Barrett Lakes Blvd.
Kennesaw, GA 30144

Michael Murray

770-426-8800

www.hobbytown.com

LEGACY STATION TOYS TRAINS AND HOBBIES

4153 Lawrenceville Hwy, #12
Lilburn, GA 30047

Brian Sheffield

770-339-7780

www.legacystation.com

RIVERDALE STATION

6632 Georgia Hwy 85
Riverdale, GA 30274

Bob Branin

770-991-6085

rivstatinc@aol.com

BACK SHOPS

MODEL TRAIN SERVICE & REPAIR

AMERICAN FLYER REPAIR

165 Primrose Pass / Newnan, GA 30265

Jack Shaw

678-230-3184

ATLANTA LOCOMOTIVE COMPANY

HO & N-scale Electrical & mechanical repairs
3204 Timbercreek Cir / Roswell, GA 30076-8810

Ovidiu Trifanescu

piko7403@yahoo.com

678-230-3184

Lathbury Electric Train Sales & Service

Authorized Lionel Service Center
959 Highland Terrace NE #6, Atlanta, GA 30306

Johnathan Lathbury

(404) 892-3113

jdtrain@aol.com

FLAG STOPS

STORES WITH TRAIN-RELATED MERCHANDISE

Southeastern Railway Museum

3595 Buford Hwy.
Duluth, GA 3009

(770) 476-2013

www.southeasternrailwaymuseum.org

Southern Museum of Civil War and Locomotive History

2829 Cherokee Street
Kennesaw, GA 30144

(770) 427-2117

www.southernmuseum.org

BRANCH LINES

OTHER HOBBY OUTLETS IN GEORGIA

Bull Street Station

307 Kentucky Avenue
Savannah, Georgia 31404

Ellie Tardif

(912) 236-4344

sales@bullst.com

Lindy's Trains

Multiple Locations

See web site for details

www.lindystrains.com

Picayune Toys

2482 Jett Ferry Rd, 660
Sandy Springs, Georgia 30338

(770) 395-0890

Picayunetoys@bellsouth.net

Southern Digital Railroad Hobbies

5295 Hwy 78, Suite D-322
Stone Mountain, Georgia 30087

(770) 929-1888

www.sodigi.com